

MHH8942



Recombinant Human Programmed cell death 1 ligand
1(CD274), partial (Active)

100ug;20ug

Order	021-34695924 orders@ab-mart.com
Support	400-6123-828 support1@ab-mart.com
Web	www.ab-mart.com.cn

Purity : Greater than 95% as determined by SDS-PAGE.

Endotoxin : Less than 1.0 EU/ug as determined by LAL method.

Biological Activity:

Measured by its binding ability in a functional ELISA. Immobilized PD-L1 at 2 µg/ml can bind Anti- PD-L1 mouse monoclonal antibody(CSB-MA878942A1m, antigen from E.coli), the EC50 of human PD-L1 protein is 1.252-1.653 ng/mL.

Gene Names : CD274

Uniprot ID : Q9NZQ7

Organism : Homo sapiens (Human)

Host : Mammalian cell

Mol.Wt. : 52.7 kDa

Expression Region : 19-238aa

Tag Info : C-terminal hFc-tagged

Form : Lyophilized powder

Buffer:

Lyophilized from a 0.2 µm filtered PBS, 6% Trehalose, pH 7.4

Reconstitution:

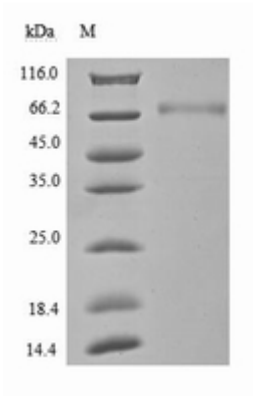
We recommend that this vial be briefly centrifuged prior to opening to bring the contents to the bottom. Please reconstitute protein in deionized sterile water to a concentration of 0.1-1.0 mg/mL. We recommend to add 5-50% of glycerol (final concentration) and aliquot for long-term storage at -20°C/-80°C. Our default final concentration of glycerol is 50%. Customers could use it as reference.

Notes:

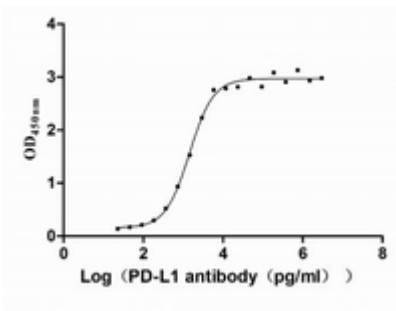
Repeated freezing and thawing is not recommended. Store working aliquots at 4°C for up to one week.

Lead Time : 3-7 business days

Images:



(Tris-Glycine gel) Discontinuous SDS-PAGE (reduced) with 5% enrichment gel and 15% separation gel.



Activity

Measured by its binding ability in a functional ELISA. Immobilized PD-L1 at 2 µg/ml can bind Anti- PD-L1 mouse monoclonal antibody(CSB-MA878942A1m,antigen from E.coli), the EC₅₀ of human PD-L1 protein is 1.252-1.653 ng/mL.