

MHH9407

Recombinant Human Somatotropin (GH1) (Active)



☐ 100ug;20ug

Order	021-34695924 orders@ab-mart.com
Support	400-6123-828 support1@ab-mart.com
Web	www.ab-mart.com.cn

Purity : Greater than 90% as determined by SDS-PAGE.

Endotoxin : Less than 1.0 EU/ug as determined by LAL method.

Biological Activity:

- ① Measured by its binding ability in a functional ELISA. Immobilized GH1 at 1 µg/ml can bind human PRLR(CSB-MP018727HU1), the EC50 of the protein is 60.71-69.65 ng/ml.
- ② Measured by its binding ability in a functional ELISA. Immobilized GH1 at 1 µg/ml can bind human GHR(CSB-MP009411HU), the EC50 of the protein is 19.28-25.29 ng/ml.

Gene Names : GH1

Uniprot ID : P01241

Organism : Homo sapiens (Human)

Host : Mammalian cell

Mol.Wt. : 27.2 kDa

Expression Region : 27-217aa

Tag Info : N-terminal 10xHis-tagged and C-terminal Myc-tagged

Form : Lyophilized powder

Buffer:

Lyophilized from a 0.2 µm filtered 20 mM Tris-HCl, 0.5 M NaCl, 6% Trehalose, pH 8.0

Reconstitution:

We recommend that this vial be briefly centrifuged prior to opening to bring the contents to the bottom. Please reconstitute protein in deionized sterile water to a concentration of 0.1-1.0 mg/mL. We recommend to add 5-50% of glycerol (final concentration) and aliquot for long-term storage at -20°C/-80°C. Our default final

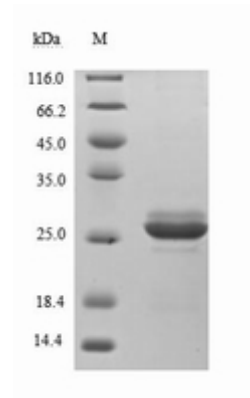
concentration of glycerol is 50%. Customers could use it as reference.

Notes:

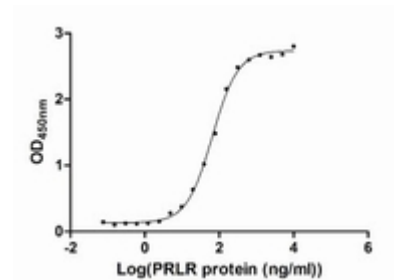
Repeated freezing and thawing is not recommended. Store working aliquots at 4°C for up to one week.

Lead Time : 3-7 business days

Images:

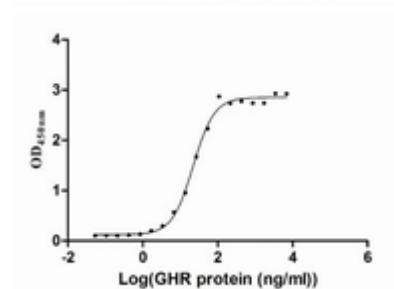


(Tris-Glycine gel) Discontinuous SDS-PAGE (reduced) with 5% enrichment gel and 15% separation gel.



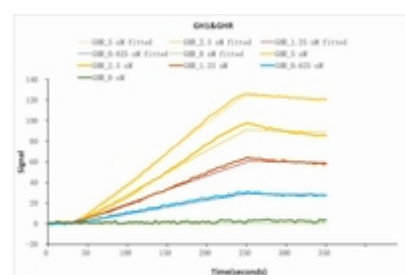
Activity

Measured by its binding ability in a functional ELISA. Immobilized GH1 at 1 µg/ml can bind human PRLR(CSB-MP018727HU1), the EC₅₀ of the protein is 60.71-69.65 ng/ml.

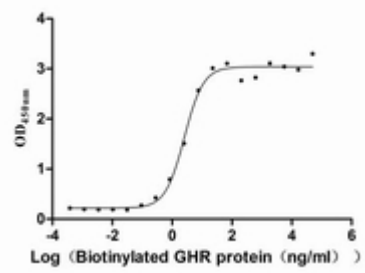


Activity

Measured by its binding ability in a functional ELISA. Immobilized GH1 at 1 µg/ml can bind human GHR(CSB-MP009411HU), the EC₅₀ of the protein is 19.28-25.29 ng/ml.



Human GH1 protein his/myc tag (CSB-MP009407HU) captured on COOH chip can bind Human GHR protein Fc tag (CSB-MP009411HU) with an affinity constant of 6.1 nM as detected by LSPR Assay.



Activity

Measured by its binding ability in a functional ELISA. Immobilized human GH1 at 2 $\mu\text{g/ml}$ can bind Biotinylated human GHR (CSB-MP009411HUj1-B), the EC_{50} is 2.067-3.208 ng/ml.