

## MHV14MO



Recombinant *Macaca fascicularis* Angiotensin-converting enzyme (ACE2), partial (Active)

100ug;20ug

|                |                                      |
|----------------|--------------------------------------|
| <b>Order</b>   | 021-34695924<br>orders@ab-mart.com   |
| <b>Support</b> | 400-6123-828<br>support1@ab-mart.com |
| <b>Web</b>     | www.ab-mart.com.cn                   |

**Purity :** Greater than 93% as determined by SDS-PAGE.

**Endotoxin :** Less than 1.0 EU/ug as determined by LAL method.

### Biological Activity:

① Measured by its binding ability in a functional ELISA. Immobilized SARS-CoV-2-S1-RBD (CSB-MP3324GMY1b1) at 5 µg/ml can bind Cynomolgus-ACE2, the EC50 is 5.638-9.496 ng/ml.

**Gene Names :** ACE2

**Uniprot ID :** A0A2K5X283

### Organism:

*Macaca fascicularis* (Crab-eating macaque) (Cynomolgus monkey)

**Host :** Mammalian cell

**Mol.Wt. :** 112.7 kDa

**Expression Region :** 18-741aa

**Tag Info :** C-terminal hFc-tagged

**Form :** Lyophilized powder

### Buffer:

Lyophilized from a 0.2 µm filtered PBS, 6% Trehalose, pH 7.4

### Reconstitution:

We recommend that this vial be briefly centrifuged prior to opening to bring the contents to the bottom. Please reconstitute protein in deionized sterile water to a concentration of 0.1-1.0 mg/mL. We recommend to add 5-50% of glycerol (final concentration) and aliquot for long-term storage at -20°C/-80°C. Our default final

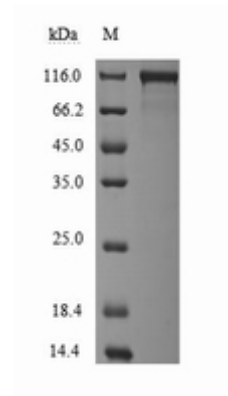
concentration of glycerol is 50%. Customers could use it as reference.

### Notes:

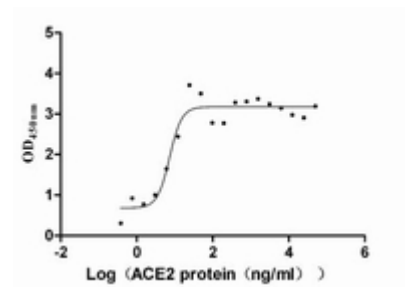
Repeated freezing and thawing is not recommended. Store working aliquots at 4°C for up to one week.

**Lead Time :** 3-7 business days

### Images:



(Tris-Glycine gel) Discontinuous SDS-PAGE (reduced) with 5% enrichment gel and 15% separation gel.



### Activity

Measured by its binding ability in a functional ELISA. Immobilized SARS-CoV-2-S1-RBD (CSB-MP3324GMY1b1) at 5 µg/ml can bind Cynomolgus-ACE2, the EC<sub>50</sub> is 5.638-9.496 ng/ml.