

**MHY24G27**

Recombinant Human Novel Coronavirus Spike glycoprotein(S), partial (Active)



1mg;100ug;20ug

<b>Order</b>	021-34695924 orders@ab-mart.com
<b>Support</b>	400-6123-828 support1@ab-mart.com
<b>Web</b>	www.ab-mart.com.cn

**Purity :** Greater than 85% as determined by SDS-PAGE.

**Endotoxin :** Not test.

**Biological Activity:**

① Measured by its binding ability in a functional ELISA. Immobilized SARS-CoV-2-S at 2 µg/ml can bind human ACE2 (CSB-MP866317HU), the EC50 of SARS-CoV-2-S protein is 56.64 - 103.6 ng/ml.

② Measured by its binding ability in a functional ELISA. Immobilized SARS-CoV-2-S at 2 µg/ml can bind SARS-CoV-2-S Antibody (CSB-RA33245A1GMY), the EC50 of SARS-CoV-2-S protein is 36.79-48.87 ng/ml.

**Gene Names :** S

**Uniprot ID :** P0DTC2

**Organism:**

Severe acute respiratory syndrome coronavirus 2 (2019-nCoV) (SARS-CoV-2)

**Host :** Mammalian cell

**Mol.Wt. :** 79.6 kDa

**Expression Region :** 16-685aa

**Tag Info:**

N-terminal 10xHis-tagged and C-terminal Flag-tagged

**Form :** Lyophilized powder

**Buffer:**

Lyophilized from a 0.2 µm filtered 20 mM Tris-HCl, 0.5 M NaCl, 6% Trehalose, pH 8.0

**Reconstitution:**

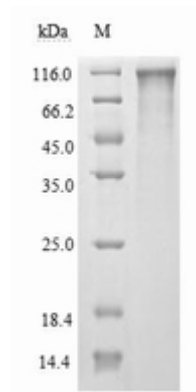
We recommend that this vial be briefly centrifuged prior to opening to bring the contents to the bottom. Please reconstitute protein in deionized sterile water to a concentration of 0.1-1.0 mg/mL. We recommend to add 5-50% of glycerol (final concentration) and aliquot for long-term storage at -20°C/-80°C. Our default final concentration of glycerol is 50%. Customers could use it as reference.

### Notes:

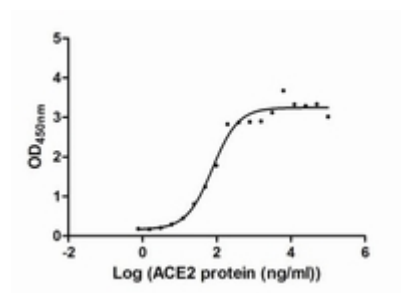
Repeated freezing and thawing is not recommended. Store working aliquots at 4°C for up to one week.

**Lead Time :** 3-7 business days

### Images:

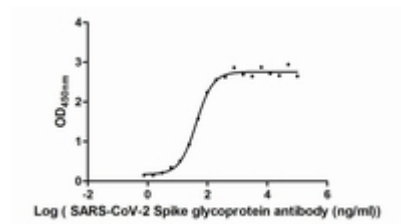


(Tris-Glycine gel) Discontinuous SDS-PAGE (reduced) with 5% enrichment gel and 15% separation gel.



#### Activity

Measured by its binding ability in a functional ELISA. Immobilized SARS-CoV-2-S at 2 µg/ml can bind human ACE2 (CSB-MP866317HU), the EC<sub>50</sub> of SARS-CoV-2-S protein is 56.64 - 103.6 ng/ml.



#### Activity

Measured by its binding ability in a functional ELISA. Immobilized SARS-CoV-2-S at 2 µg/ml can bind SARS-CoV-2-S Antibody (CSB-RA33245A1GMY), the EC<sub>50</sub> of SARS-CoV-2-S protein is 36.79-48.87 ng/ml