

MHY24G57

Recombinant Human Novel Coronavirus Spike glycoprotein(S), partial (Active)



1mg;100ug;20ug

Order	021-34695924 orders@ab-mart.com
Support	400-6123-828 support1@ab-mart.com
Web	www.ab-mart.com.cn

Purity : Greater than 90% as determined by SDS-PAGE.

Endotoxin : Not test.

Biological Activity:

- ① Measured by its binding ability in a functional ELISA. Immobilized SARS-CoV-2-S1-RBD at 2 µg/ml can bind SARS-CoV-2-S Antibody (CSB-RA33245A1GMY), the EC50 of SARS-CoV-2-S1-RBD protein is 27.96 - 33.35 ng/ml.
- ② Measured by its binding ability in a functional ELISA. Immobilized SARS-CoV-2-S1-RBD at 2 µg/ml can bind SARS-CoV-2-S Antibody (CSB-RA33245A0GMY), the EC50 of SARS-CoV-2-S1-RBD protein is 13.96 -16.62 ng/ml.
- ③ Measured by its binding ability in a functional ELISA. Immobilized SARS-CoV-2-S1-RBD at 5 µg/ml can bind human ACE2 (CSB-MP866317HU), the EC50 is 2.785-9.139 ng/ml.
- ④ SARS-CoV-2 Spike protein RBD his/myc tag (CSB-MP3324GMY1b1) captured on COOH chip can bind Human ACE2 protein Fc tag (CSB-MP866317HU) with an affinity constant of 13.8 nM as detected by LSPR Assay.
- ⑤ Measured by its binding ability in a functional ELISA. Immobilized SARS-CoV-2-S1-RBD at 2 µg/ml can bind Biotinylated human ACE2 (CSB-MP866317HU-B), the EC50 is 4.599-8.322 ng/ml.

Gene Names : S

Uniprot ID : P0DTC2

Organism:

Severe acute respiratory syndrome coronavirus 2 (2019-nCoV) (SARS-CoV-2)

Host : Mammalian cell

Mol.Wt. : 30.1 kDa

Expression Region : 319-541aa

Tag Info : N-terminal 10xHis-tagged and C-terminal Myc-tagged

Form : Lyophilized powder

Buffer:

Lyophilized from a 0.2 µm filtered 20 mM Tris-HCl, 0.5 M NaCl, 6% Trehalose, pH 8.0

Reconstitution:

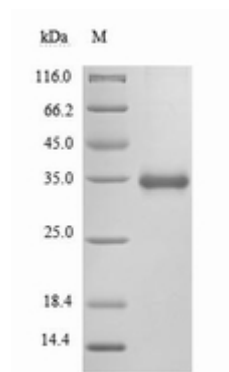
We recommend that this vial be briefly centrifuged prior to opening to bring the contents to the bottom. Please reconstitute protein in deionized sterile water to a concentration of 0.1-1.0 mg/mL. We recommend to add 5-50% of glycerol (final concentration) and aliquot for long-term storage at -20°C/-80°C. Our default final concentration of glycerol is 50%. Customers could use it as reference.

Notes:

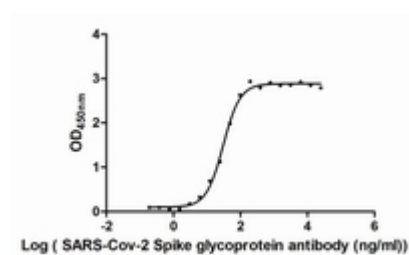
Repeated freezing and thawing is not recommended. Store working aliquots at 4°C for up to one week.

Lead Time : 3-7 business days

Images:

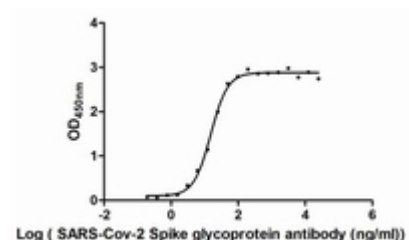


(Tris-Glycine gel) Discontinuous SDS-PAGE (reduced) with 5% enrichment gel and 15% separation gel.



Activity

Measured by its binding ability in a functional ELISA. Immobilized SARS-CoV-2-S1-RBD at 2 µg/ml can bind SARS-CoV-2-S Antibody (CSB-RA33245A1GMY), the EC₅₀ of SARS-CoV-2-S1-RBD protein is 27.96 - 33.35 ng/ml.



Activity

Measured by its binding ability in a functional ELISA. Immobilized SARS-CoV-2-S1-RBD at 2 µg/ml can bind SARS-CoV-2-S Antibody (CSB-RA33245A0GMY), the EC₅₀ of SARS-CoV-2-S1-RBD protein is 13.96 -16.62 ng/ml.



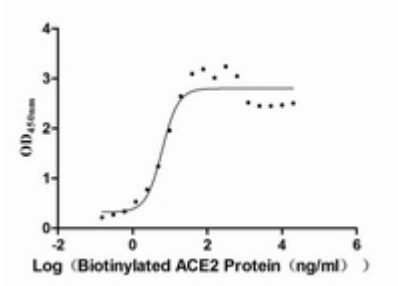
Activity

Measured by its binding ability in a functional ELISA. Immobilized SARS-CoV-2-S1-RBD at 5 µg/ml can bind human ACE2 (CSB-MP866317HU), the EC₅₀ is 2.785-9.139 ng/ml.



Activity

SARS-CoV-2 Spike protein RBD his/myc tag (CSB-MP3324GMY1b1) captured on COOH chip can bind Human ACE2 protein Fc tag (CSB-MP866317HU) with an affinity constant of 13.8 nM as detected by LSPR Assay.



Activity

Measured by its binding ability in a functional ELISA. Immobilized SARS-CoV-2-S1-RBD at 2 μ g/ml can bind Biotinylated human ACE2 (CSB-MP866317HU-B), the EC₅₀ is 4.599-8.322 ng/ml