

**MHY24G73**

Recombinant Human Novel Coronavirus Spike  
glycoprotein(S), partial (Active)



☐ 1mg;100ug;20ug

<b>Order</b>	021-34695924 orders@ab-mart.com
<b>Support</b>	400-6123-828 support1@ab-mart.com
<b>Web</b>	www.ab-mart.com.cn

**Purity :** Greater than 90% as determined by SDS-PAGE.

**Endotoxin :** Less than 1.0 EU/ug as determined by LAL method.

**Biological Activity:**

- ① Measured by its binding ability in a functional ELISA. Immobilized SARS-CoV-2-S1-RBD at 2 µg/ml can bind Biotinylated Anti-SARS-CoV-2-S Antibody (CSB-RA33245D1GMY), the EC50 of SARS-CoV-2-S1-RBD protein is 106.2-131.2 ng/ml.
- ② Measured by its binding ability in a functional ELISA. Immobilized human ACE2 (CSB-MP866317HU) at 2 µg/ml can bind SARS-CoV-2-S1-RBD, the EC50 of SARS-CoV-2-S1-RBD protein is 8.363-12.82 ng/ml.

**Uniprot ID :** P0DTC2

**Organism:**

Severe acute respiratory syndrome coronavirus 2 (2019-nCoV) (SARS-CoV-2)

**Host :** Mammalian cell

**Mol.Wt. :** 51.1 kDa

**Expression Region :** 319-541aa

**Tag Info :** C-terminal 6xHis-mFc-tagged

**Form :** Lyophilized powder

**Buffer:**

Lyophilized from a 0.2 µm filtered 20 mM Tris-HCl, 0.5 M NaCl, 6% Trehalose, pH 8.0

**Reconstitution:**

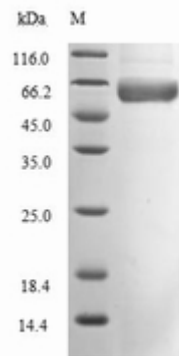
We recommend that this vial be briefly centrifuged prior to opening to bring the contents to the bottom. Please reconstitute protein in deionized sterile water to a concentration of 0.1-1.0 mg/mL. We recommend to add 5-50% of glycerol (final concentration) and aliquot for long-term storage at -20°C/-80°C. Our default final

concentration of glycerol is 50%. Customers could use it as reference.

**Notes :** Partial

**Lead Time :** 3-7 business days

**Images:**



(Tris-Glycine gel) Discontinuous SDS-PAGE (reduced) with 5% enrichment gel and 15% separation gel.

Predicted band size: 51.1 kDa

Observed band size: 66 kDa due to glycosylation



Measured by its binding ability in a functional ELISA. Immobilized SARS-CoV-2-S1-RBD at 2  $\mu\text{g/ml}$  can bind Biotinylated Anti-SARS-CoV-2-S Antibody (CSB-RA33245D1GMY), the  $\text{EC}_{50}$  of SARS-CoV-2-S1-RBD protein is 106.2-131.2 ng/ml.



Measured by its binding ability in a functional ELISA. Immobilized human ACE2 (CSB-MP866317HU) at 2  $\mu\text{g/ml}$  can bind SARS-CoV-2-S1-RBD, the  $\text{EC}_{50}$  of SARS-CoV-2-S1-RBD protein is 8.363-12.82 ng/ml.