

YHS64494



Recombinant *Salmonella typhimurium* D-galactose-binding periplasmic protein(mglB)

500ug;100ug;20ug

Order	021-34695924 orders@ab-mart.com
Support	400-6123-828 support1@ab-mart.com
Web	www.ab-mart.com.cn

Purity : Greater than 90% as determined by SDS-PAGE.

Gene Names : mglB

Uniprot ID : P23905

Organism:

Salmonella typhimurium (strain LT2 / SGSC1412 / ATCC 700720)

Host : Yeast

Mol.Wt. : 35.4 kDa

Expression Region : 24-332aa

Tag Info : N-terminal 6xHis-tagged

Form : Liquid or Lyophilized powder

Buffer:

If the delivery form is liquid, the default storage buffer is Tris/PBS-based buffer, 5%-50% glycerol.

If the delivery form is lyophilized powder, the buffer before lyophilization is Tris/PBS-based buffer, 6% Trehalose, pH 8.0.

Reconstitution:

We recommend that this vial be briefly centrifuged prior to opening to bring the contents to the bottom. Please reconstitute protein in deionized sterile water to a concentration of 0.1-1.0 mg/mL. We recommend to add 5-50% of glycerol (final concentration) and aliquot for long-term storage at -20°C/-80°C. Our default final concentration of glycerol is 50%. Customers could use it as reference.

Storage:

The shelf life is related to many factors, storage state, buffer ingredients, storage temperature and the stability of the protein itself.

Generally, the shelf life of liquid form is 6 months at -20°C/-80°C. The shelf life of lyophilized form is 12 months at -20°C/-80°C.

Notes:

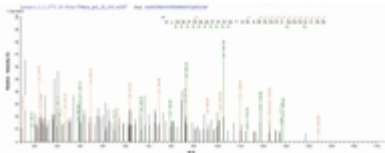
Repeated freezing and thawing is not recommended. Store working aliquots at 4°C for up to one week.

Lead Time : 3-7 business days

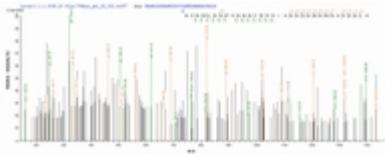
Images:



(Tris-Glycine gel) Discontinuous SDS-PAGE (reduced) with 5% enrichment gel and 15% separation gel.



Based on the SEQUEST from database of Yeast host and target protein, the LC-MS/MS Analysis result of CSB-YP326441SXB could indicate that this peptide derived from Yeast-expressed Salmonella typhimurium (strain LT2 / SGSC1412 / ATCC 700720) mgIB.



Based on the SEQUEST from database of Yeast host and target protein, the LC-MS/MS Analysis result of CSB-YP326441SXB could indicate that this peptide derived from Yeast-expressed Salmonella typhimurium (strain LT2 / SGSC1412 / ATCC 700720) mgIB.