

MN00306

GAPDH mAb

Abmart

Order 021-34695924
orders@ab-mart.com
Support 400-6123-828
support1@ab-mart.com
Web www.ab-mart.com.cn

50ul;100ul;

Background:

Glyceraldehyde 3 phosphate dehydrogenase (GAPDH) is well known as one of the key enzymes involved in glycolysis. GAPDH is constitutively abundant expressed in almost cell types at high levels, therefore antibodies against GAPDH are useful as loading controls for Western Blotting. Some pathology factors, such as hypoxia and diabetes, increased or decreased GAPDH expression in certain cell types.

Gene Name : GAPDH

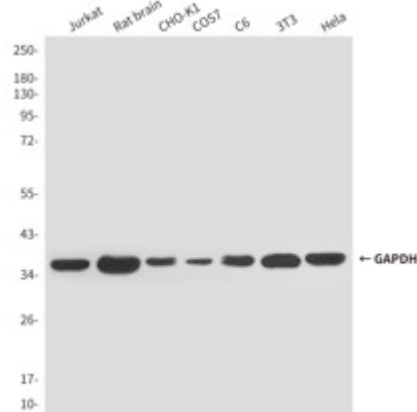
Alternative Names : G3PD; GAPD; HEL-S-162eP

Uniprot : P04406

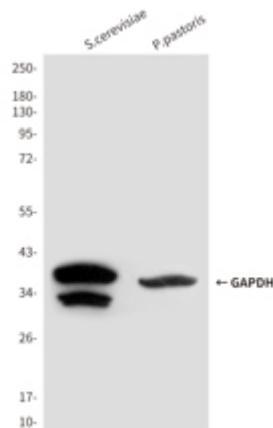
Source : Mouse

Application

WB



Western blot analysis of GAPDH in HeLa, 3T3, C6, COS7, CHOK1, Rat brain and Jurkat lysates using GAPDH antibody.



Western blot analysis of GAPDH in S.cerevisiae and P.pastoris lysates using GAPDH antibody.

Clonality : Monoclonal Antibody

Isotype : IgM

Immunogen:

Purified recombinant human GAPDH protein fragments expressed in E.coli.

Reactivity:

Human,Monkey,Rat,Mouse,Saccharomycescerevisiae,Pichiapastoris,Hamster

Dilution : WB: 1/5000-1/10000

Molecular Weight:

Calculated MW: 36 kDa; Observed MW: 36 kDa

Purification : Affinity Purified

Form : Liquid

Concentration : 1.9 mg/ml

Buffer:

Liquid in PBS containing 50% glycerol, 0.5% BSA and 0.02% sodium azide, pH 7.3.

Storage:

Store at 4°C short term. Store at -20°C long term. Avoid freeze/thaw cycles.