

MN01113

HA Tag mAb

Abmart

Order 021-34695924
orders@ab-mart.com

Support 400-6123-828
support1@ab-mart.com

Web www.ab-mart.com.cn

□ 50ul;100ul;

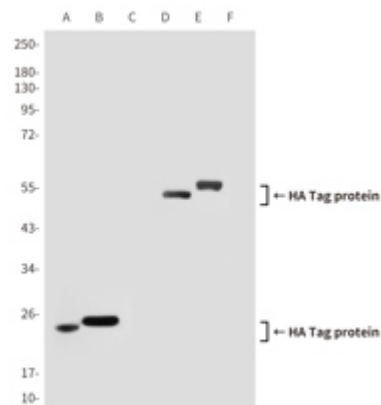
Background:

The HA tag is derived from the human influenza hemagglutinin corresponding to amino acids 98-106. It has been extensively used as a general epitope tag in expression vectors. This tag facilitates the detection, isolation, and purification of the proteins.

Source : Mouse

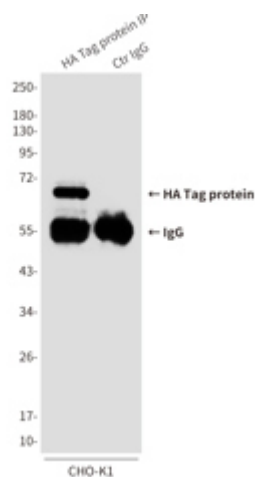
Application

WB



Western blot analysis of HA Tag in CHO-K1 (C, F) or CHOK1 transfected with different HAFusion proteins (A, B, D, E), using HATag antibody.

IP



Immunoprecipitation analysis of HA Tag in HeLa cell lysates transfected with HAtagged fusion protein using HATag antibody

Clonality : Monoclonal Antibody

Isotype : IgG1

Immunogen:

HA synthetic peptide (YPYDVPDYA) conjugated to KLH.

Reactivity : Transfected

Dilution : WB: 1/1000-1/10000 IP: 1/20

Molecular Weight : Refer to figures

Purification : Affinity Purified

Form : Liquid

Concentration : 1.48 mg/ml

Buffer:

Liquid in PBS containing 50% glycerol, 0.5% BSA and 0.02% sodium azide, pH 7.3.

Storage:

Store at 4°C short term. Store at -20°C long term. Avoid freeze/thaw cycles.