

MN01126
Flag Tag mAb

Abmart

Order 021-34695924
orders@ab-mart.com
Support 400-6123-828
support1@ab-mart.com
Web www.ab-mart.com.cn

□ 50ul;100ul;

Background:

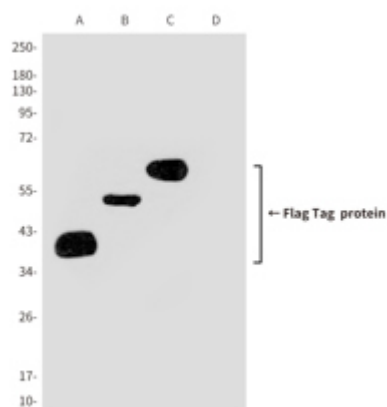
Epitope tags are useful for the labeling and detection of proteins using immunoblotting, immunoprecipitation, and immunostaining techniques. Because of their small size, they are unlikely to affect the tagged protein's biochemical properties. The DYKDDDDK peptide has been used extensively as a general epitope tag in expression vectors. This peptide can be expressed and detected with the protein of interest as an amino-terminal or carboxy-terminal fusion.

Alternative Names : DYKDDDDK Tag; Flag; FLAG

Source : Mouse

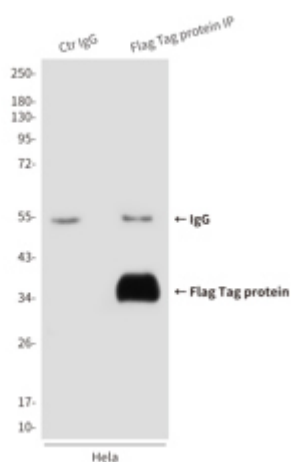
Application

WB



Western blot analysis of HA Tag in CHOK1 (D) or CHOK1 transfected with different FLAG fusion proteins (A, B, C), using FLAG Tag antibody.

IP



Immunoprecipitation analysis of Flag Tag in CHO K1 lysates transfected with FLAGTagged DR5 using FLAG Tag antibody. IP: FLAG Tag antibody; WB: DR5 antibody(2008224G12).

Clonality : Monoclonal Antibody

Isotype : IgG1

Immunogen:

DYKDDDDK synthetic peptide conjugated to KLH.

Reactivity : Transfected

Dilution : WB: 1/1000-1/10000 IP: 1/20

Molecular Weight : Refer to figures

Purification : Affinity Purified

Form : Liquid

Concentration : 3.6 mg/ml

Buffer:

Liquid in PBS containing 50% glycerol, 0.5% BSA and 0.02% sodium azide, pH 7.3.

Storage:

Store at 4°C short term. Store at -20°C long term. Avoid freeze/thaw cycles.