

**MN50132**

beta Actin mAb



**Order** 021-34695924  
orders@ab-mart.com  
**Support** 400-6123-828  
support1@ab-mart.com  
**Web** www.ab-mart.com.cn

☐ 50ul;100ul;

### Background:

beta-Actin is one of six different actin isoforms that have been identified. The actin molecules found in cells of various species and tissues tend to be very similar in their immunological and physical properties. Therefore, Antibodies against beta-Actin are useful as loading controls for Western Blotting. However it should be noted that levels of beta-Actin may not be stable in certain cells. For example, expression of beta-Actin in adipose tissue is very low and therefore it should not be used as loading control for these tissues.

**Gene Name :** ACTB

### Alternative Names:

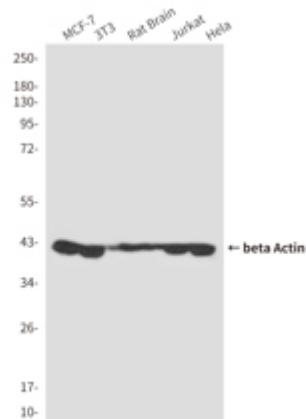
ACTIN; ACTB; BETA-ACTIN; beta actin; actin beta

**Uniprot :** P60709

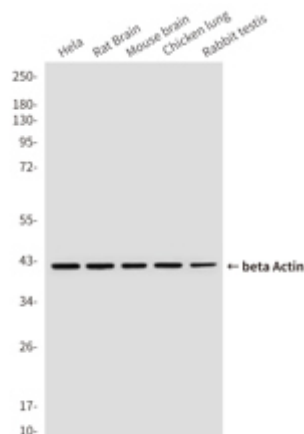
**Source :** Mouse

### Application

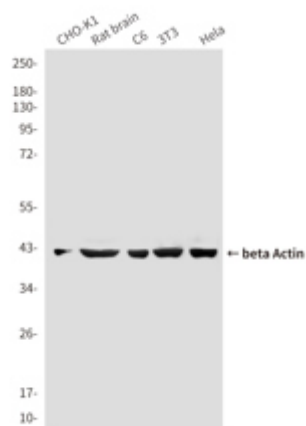
WB



Western blot analysis of beta actin in MCF7, 3T3, Rat Brain, Jurkat and HeLa lysates using beta actin antibody.

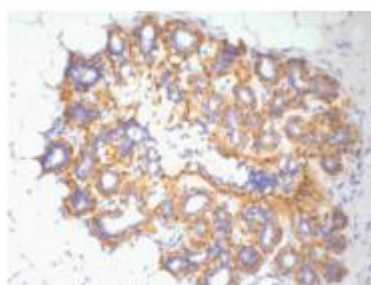


Western blot analysis of beta Actin in HeLa, Rat brain, Mouse brain, Chicken lung and Rabbit testis using beta Actin antibody.



Western blot analysis of  $\beta$ Actin in CHOK1, Rat brain, C6, 3T3, HeLa lysates using  $\beta$ Actin antibody.

IHC



Immunohistochemistry analysis of paraffin-embedded Human ovary tissue using beta Actin antibody. High-pressure and temperature Sodium Citrate pH 6.0 was used for antigen retrieval.

**Clonality :** Monoclonal Antibody

**Isotype :** IgG1

**Immunogen :** Synthetic Peptide of  $\beta$ -actin

**Reactivity:**

Human, Rat, Mouse, Monkey, Dog, Chicken, Hamster, Rabbit, Insect

**Dilution:**

WB: 1/5000-1/10000 IHC: 1/50-1/200 IF: 1/100-1/200

**Molecular Weight:**

Calculated MW: 42 kDa; Observed MW: 42 kDa

**Purification :** Affinity Purified

**Form :** Liquid

**Concentration :** 2.76 mg/ml

**Buffer:**

Liquid in PBS containing 50% glycerol, 0.5% BSA and 0.02% sodium azide, pH 7.3.

**Storage:**

Store at 4°C short term. Store at -20°C long term. Avoid freeze/thaw cycles.