

MN50133

GAPDH mAb



Order 021-34695924
orders@ab-mart.com
Support 400-6123-828
support1@ab-mart.com
Web www.ab-mart.com.cn

50ul;100ul;

Background:

Glyceraldehyde 3 phosphate dehydrogenase (GAPDH) is well known as one of the key enzymes involved in glycolysis. GAPDH is constitutively abundant expressed in almost cell types at high levels, therefore antibodies against GAPDH are useful as loading controls for Western Blotting. Some pathology factors, such as hypoxia and diabetes, increased or decreased GAPDH expression in certain cell types.

Gene Name : GAPDH

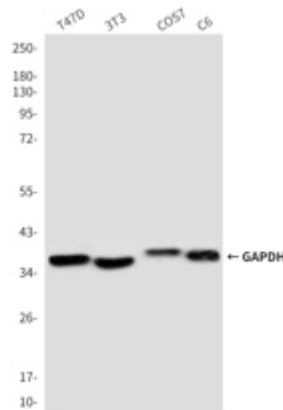
Alternative Names : G3PD; GAPD; HEL-S-162eP

Uniprot : P04406

Source : Mouse

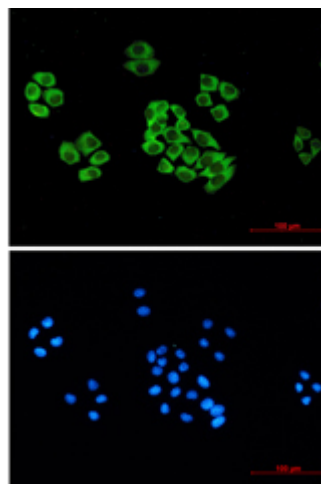
Application

WB



Western blot analysis of GAPDH in T47D, 3T3, COS7 and C6 lysates using GAPDH antibody.

IF



Immunofluorescence analysis of GAPDH in Human tonsil tissue using GAPDH antibody.

Clonality : Monoclonal Antibody

Isotype : IgG1

Immunogen : Synthetic Peptide of GAPDH

Reactivity:

Human,Rat,Mouse,Monkey,Dog,Chicken,Hamster,Rabbit,Pig,Sheep,Insect,Yeast

Dilution:

WB: 1/5000-1/10000 IHC: 1/50-1/200 IF: 1/100-1/200

Molecular Weight:

Calculated MW: 36 kDa; Observed MW: 36 kDa

Purification : Affinity Purified

Form : Liquid

Concentration : 2.5 mg/ml

Buffer:

Liquid in PBS containing 50% glycerol, 0.5% BSA and 0.02% sodium azide, pH 7.3.

Storage:

Store at 4°C short term. Store at -20°C long term. Avoid freeze/thaw cycles.