

MN50177

beta Tubulin mAb

Abmart

Order 021-34695924
orders@ab-mart.com
Support 400-6123-828
support1@ab-mart.com
Web www.ab-mart.com.cn

☐ 50ul;100ul;

Background:

Tubulin is the major constituent of microtubules. It binds two moles of GTP, one at an exchangeable site on the beta chain and one at a non-exchangeable site on the alpha chain.

Gene Name : TUBB

Alternative Names:

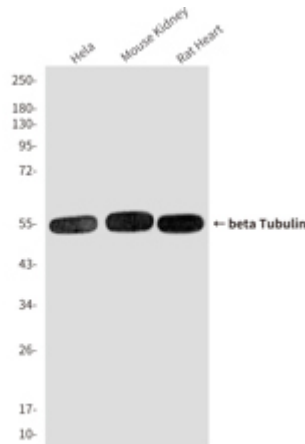
Beta 4 tubulin; TBB5; TUBB2; TUBB2A; tubulin beta 2A; beta tubulin; tubulin beta chain

Uniprot : P07437

Source : Mouse

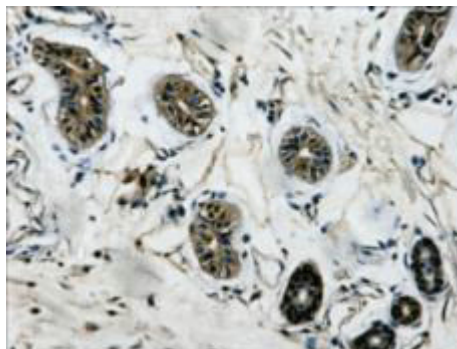
Application

WB



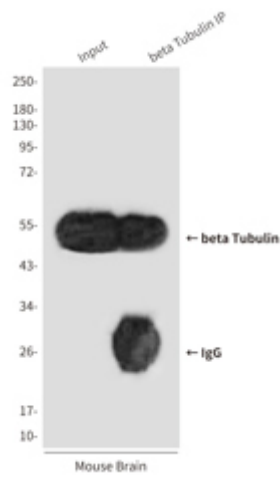
Western blot analysis of HeLa, Mouse Kidney, Rat Heart lysates using beta Tubulin antibody.

IHC



Immunohistochemistry analysis of paraffin-embedded Human colon tissue using beta Tubulin antibody. High-pressure and temperature Sodium Citrate pH 6.0 was used for antigen retrieval.

IP



Immunoprecipitation analysis of beta Tubulin in Mouse Brain lysates using beta Tubulin antibody.

Clonality : Monoclonal Antibody

Isotype : IgG1

Immunogen : Synthetic Peptide of β -tubulin

Reactivity:

Human,Rat,Mouse,Monkey,Dog,Chicken,Hamster,Rabbit

Dilution : WB: 1/5000-1/10000 IHC: 1/50-1/200 IP: 1/20

Molecular Weight:

Calculated MW: 50 kDa; Observed MW: 55 kDa

Purification : Affinity Purified

Form : Liquid

Concentration : 1 mg/ml

Buffer:

Liquid in PBS containing 50% glycerol, 0.5% BSA and 0.02% sodium azide, pH 7.3.

Storage:

Store at 4°C short term. Store at -20°C long term. Avoid freeze/thaw cycles.