

MN50347

Flag Tag mAb

Abmart

Order 021-34695924
orders@ab-mart.com

Support 400-6123-828
support1@ab-mart.com

Web www.ab-mart.com.cn

☐ 50ul;100ul;

Background:

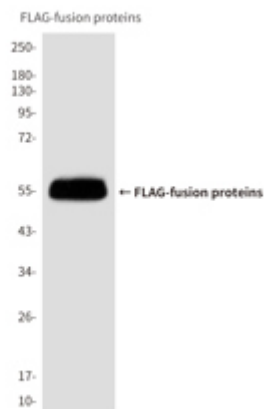
Epitope tags are useful for the labeling and detection of proteins using immunoblotting, immunoprecipitation, and immunostaining techniques. Because of their small size, they are unlikely to affect the tagged protein's biochemical properties. The DYKDDDDK peptide has been used extensively as a general epitope tag in expression vectors. This peptide can be expressed and detected with the protein of interest as an amino-terminal or carboxy-terminal fusion.

Alternative Names : DYKDDDDK Tag; Flag; FLAG

Source : Mouse

Application

WB



Western blot analysis of Flag Recombinant Protein using Flag antibody diluted at 1:10000.

Clonality : Monoclonal Antibody

Isotype : IgG1

Immunogen : Synthetic peptide conjugated to KLH.

Reactivity : Transfected

Dilution : WB: 1/1000-1/10000

Molecular Weight : Refer to figures

Purification : Affinity Purified

Form : Liquid

Concentration : 1 mg/ml

Buffer:

Liquid in PBS containing 50% glycerol, 0.5% BSA and 0.02% sodium azide, pH 7.3.

Storage:

Store at 4°C short term. Store at -20°C long term. Avoid freeze/thaw cycles.

