

PN00195

GST Tag Rabbit pAb

Abmart

Order 021-34695924
orders@ab-mart.com
Support 400-6123-828
support1@ab-mart.com
Web www.ab-mart.com.cn

50ul;100ul;

Background:

This antibody is high affinity to the glutathione-S-transferase (GST) from *Schistosoma japonicum*. This antibody will detect the expressed GST protein or a GST-fusion protein, and can be utilized for immuno-purification of GST-fusion proteins.

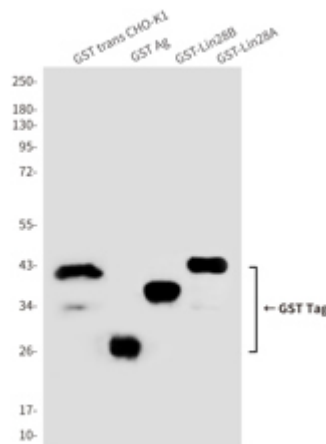
Alternative Names:

Glutathione S Transferase; Glutathione S transferase Mu 1; Glutathione S-transferase class-mu 26 kDa isozyme; GST 26; GST; GST class mu 1; GST1; GSTM1 1; GSTM1a 1a; GSTM1b 1b; GTH4; GTM1

Source : Rabbit

Application

WB



Western blot analysis of GST in CHO-K1 transfected with GST lysates and GST recombinant protein fragments, purified recombinant human GSTLin28B & GSTLin28A protein fragments expressed in *E.coli*, using GST antibody.

Clonality : Polyclonal Antibody

Isotype : IgG

Immunogen:

Purified recombinant *Escherichia coli* BL21(DE3) GST protein fragments expressed in *E.coli*.

Reactivity : Transfected

Dilution : WB: 1/1000-1/10000

Molecular Weight:

Calculated MW: 26 kDa; Observed MW: Refer to figures

Purification : Affinity Purified

Form : Liquid

Concentration : 0.7 mg/ml

Buffer:

Liquid in PBS containing 50% glycerol, 0.5% BSA and 0.02% sodium azide, pH 7.3.

Storage:

Store at 4°C short term. Store at -20°C long term. Avoid freeze/thaw cycles.