

**TN23623**

beta Tubulin Rabbit mAb



**Order** 021-34695924  
orders@ab-mart.com  
**Support** 400-6123-828  
support1@ab-mart.com  
**Web** www.ab-mart.com.cn

50ul;100ul;

**Background:**

Tubulin is the major constituent of microtubules. It binds two moles of GTP, one at an exchangeable site on the beta chain and one at a non-exchangeable site on the alpha chain.

**Gene Name :** TUBB

**Alternative Names:**

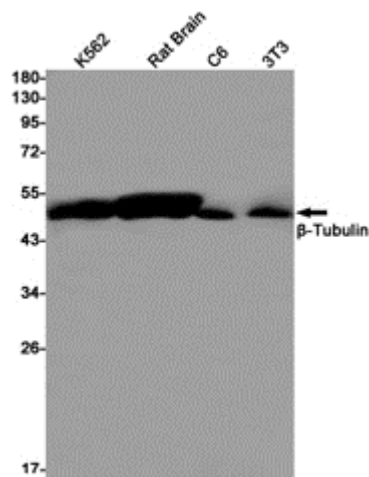
Beta 4 tubulin; TBB5; TUBB2; TUBB2A; tubulin beta 2A; beta tubulin; tubulin beta chain

**Uniprot :** P07437

**Source :** Rabbit

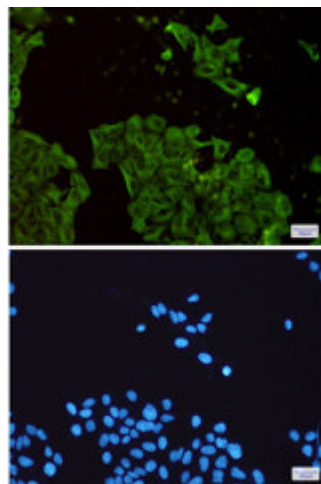
**Application**

WB



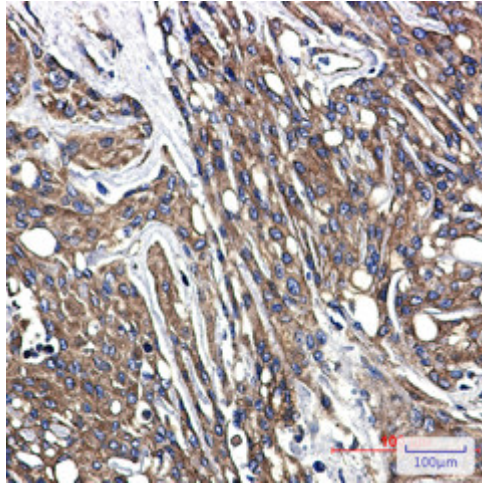
Western blot analysis of beta Tubulin in K562, Rat Brain, C6, 3T3 lysates using beta Tubulin antibody.

IF



Immunocytochemistry analysis of beta Tubulin(green) in HeLa using beta Tubulin antibody, and DAPI(blue)

## IHC



Immunohistochemistry analysis of paraffin-embedded Human brain using beta Tubulin antibody. High-pressure and temperature Sodium Citrate pH6.0 was used for antigen retrieval.

**Clonality :** Monoclonal Antibody

**Isotype :** IgG

**Immunogen :** A synthetic peptide of human beta Tubulin

**Reactivity :** Human, Mouse, Rat

**Dilution:**

WB: 1/5000-1/10000 IHC: 1/50-1/200 IF: 1/100-1/200

**Molecular Weight:**

Calculated MW: 50 kDa; Observed MW: 55 kDa

**Purification :** Affinity Purified

**Form :** Liquid

**Concentration :** 0.3 mg/ml

**Buffer:**

50mM Tris-Glycine (pH 7.4), 0.15M NaCl, 40% Glycerol, 0.01% Sodium azide and 0.05% BSA

**Storage:**

Store at 4°C short term. Store at -20°C long term. Avoid freeze/thaw cycles.