

**TN24404**  
GAPDH Rabbit mAb



**Order** 021-34695924  
orders@ab-mart.com  
**Support** 400-6123-828  
support1@ab-mart.com  
**Web** www.ab-mart.com.cn

□ 50ul;100ul;

**Background:**

Glyceraldehyde 3 phosphate dehydrogenase (GAPDH) is well known as one of the key enzymes involved in glycolysis. GAPDH is constitutively abundant expressed in almost cell types at high levels, therefore antibodies against GAPDH are useful as loading controls for Western Blotting. Some pathology factors, such as hypoxia and diabetes, increased or decreased GAPDH expression in certain cell types.

**Gene Name :** GAPDH

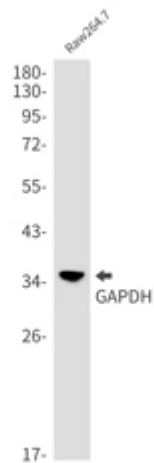
**Alternative Names :** G3PD; GAPD; HEL-S-162eP

**Uniprot :** P04406

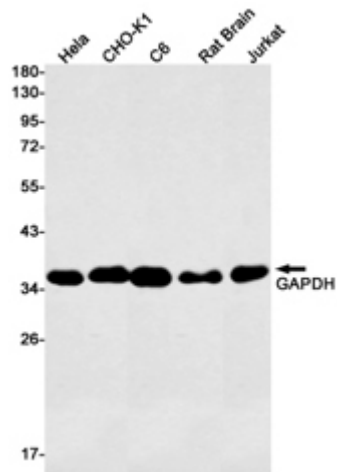
**Source :** Rabbit

**Application**

WB

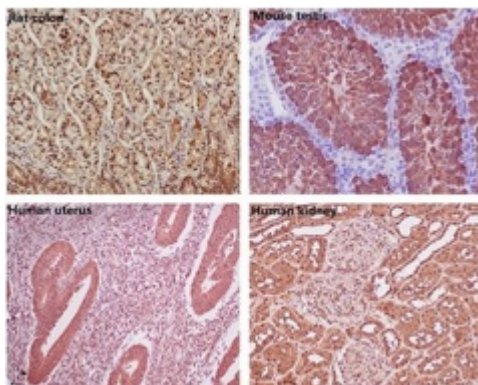


Western blot analysis of GAPDH in Raw264.7 lysates using GAPDH antibody.



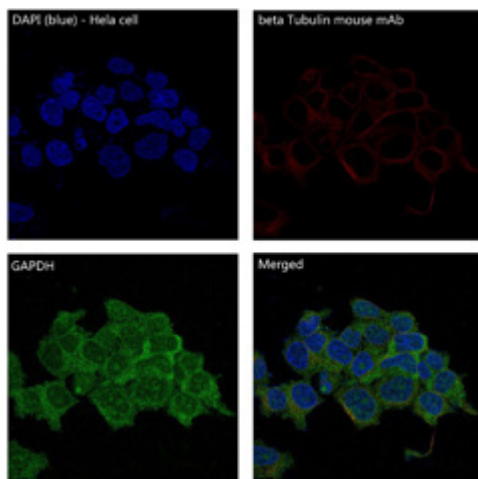
Western blot analysis of GAPDH in HeLa, CHOK1, C6, Rat Brain, Jurkat lysates using GAPDH antibody.

## IHC



Immunohistochemistry analysis of paraffin-embedded (1) Rat colon; (2) Mouse testis; (3) Human uterus; (4) Human kidney, using GAPDH Antibody. High-pressure and temperature Sodium Citrate pH6.0 was used for antigen retrieval.

## IF



Immunofluorescent analysis of GAPDH in HeLa using GAPDH antibody.

**Clonality :** Monoclonal Antibody

**Isotype :** IgG

**Immunogen :** Recombinant protein of human GAPDH

**Reactivity :** Human, Mouse, Rat, Hamster

**Dilution:**

WB: 1/5000-1/10000 IHC: 1/50-1/200 IF: 1/100-1/200

**Molecular Weight:**

Calculated MW: 36 kDa; Observed MW: 36 kDa

**Purification :** Affinity Purified

**Form :** Liquid

**Concentration :** 0.3 mg/ml

**Buffer:**

50mM Tris-Glycine(pH 7.4), 0.15M NaCl, 40% Glycerol, 0.01% Sodium azide and 0.05% BSA

**Storage:**

Store at 4°C short term. Store at -20°C long term. Avoid freeze/thaw cycles.