

MG125877

SETD1A monoclonal antibody



- 50ul
- 100 uL

Order	021-34695924 orders@ab-mart.com
Support	400-6123-828 support1@ab-mart.com
Web	www.ab-mart.com.cn

Description:

SET1A is a component of a histone methyltransferase (HMT) complex that produces mono-, di-, and trimethylated histone H3 at Lys4. The complex is the analog of the *S. cerevisiae* Set1/COMPASS complex (Lee and Skalnik, 2005 [PubMed 16253997]). Also see SET1B (MIM 611055). [supplied by OMIM, Mar 2008]

UniProt : O15047

Alternative Names:

SET domain containing 1A,SETD1A,KMT2F; Set1; Set1A

Mol Weight() : 185.9 kDa

Isotype : Mouse IgG

Clonality : Mouse monoclonal

Source : Mouse

Reactivity : Human, Mouse

Purification:

Purified from mouse ascites fluids or tissue culture supernatant by affinity chromatography (protein A/G)

Storage Condition and Buffer:

PBS (PH 7.3) containing 1% BSA, 50% glycerol and 0.02% sodium azide.

Immunogen:

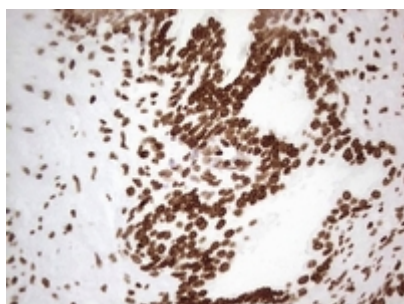
Human recombinant protein fragment corresponding to amino acids 1-320 of human SETD1A(NP_055527) produced in *E.coli*.

Content : 1 mg/ml

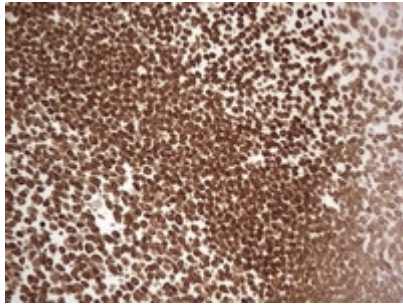
Application : IHC, WB

Dilution : WB 1:500, IHC 1:150

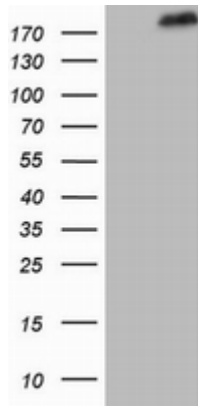
Image:



Immunohistochemical staining of paraffin-embedded Human prostate tissue within the normal limits using anti-SETD1A mouse monoclonal antibody. (Heat-induced epitope retrieval by 1mM EDTA in 10mM Tris, pH8.5, 120°C for 3min)



Immunohistochemical staining of paraffin-embedded Human tonsil within the normal limits using anti-SETD1A mouse monoclonal antibody. (Heat-induced epitope retrieval by 1mM EDTA in 10mM Tris, pH8.5, 120°C for 3min)



HEK293T cells were transfected with the pCMV6-ENTRY control (Left lane) or pCMV6-ENTRY SETD1A (Right lane) cDNA for 48 hrs and lysed. Equivalent amounts of cell lysates (5 ug per lane) were separated by SDS-PAGE and immunoblotted with anti-SETD1A.