

MG172383

ZFP36 monoclonal antibody



- 50ul
- 100 uL

Order 021-34695924
orders@ab-mart.com

Support 400-6123-828
support1@ab-mart.com

Web www.ab-mart.com.cn

UniProt : P26651

Alternative Names:

ZFP36 ring finger protein,ZFP36,GOS24; GOS24; NUP475; RNF162A; TIS11; TTP; zfp-36

Mol Weight() : 33.8 kDa

Isotype : Mouse IgG

Clonality : Mouse monoclonal

Source : Mouse

Reactivity : Human, Mouse, Rat

Purification:

Purified from mouse ascites fluids or tissue culture supernatant by affinity chromatography (protein A/G)

Storage Condition and Buffer:

PBS (PH 7.3) containing 1% BSA, 50% glycerol and 0.02% sodium azide.

Immunogen:

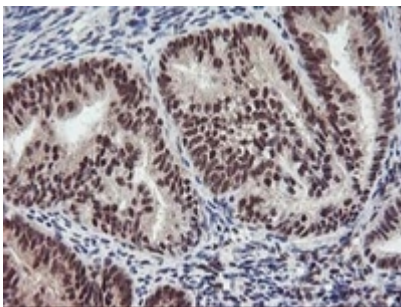
Full length human recombinant protein of human ZFP36(NP_003398) produced in HEK293T cell.

Content : 1 mg/ml

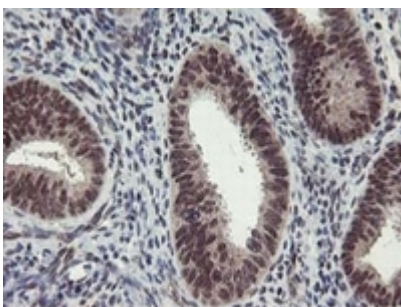
Application : FC, IHC, WB

Dilution : WB 1:2000, IHC 1:150, FLOW 1:100

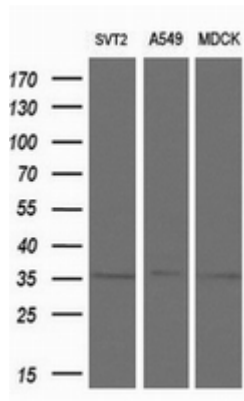
Image:



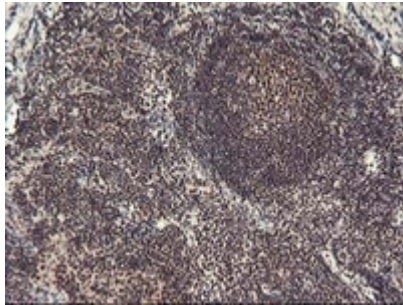
Immunohistochemical staining of paraffin-embedded Adenocarcinoma of Human endometrium tissue using anti-ZFP36 mouse monoclonal antibody. (Heat-induced epitope retrieval by 10mM citric buffer, pH6.0, 100°C for 10min)



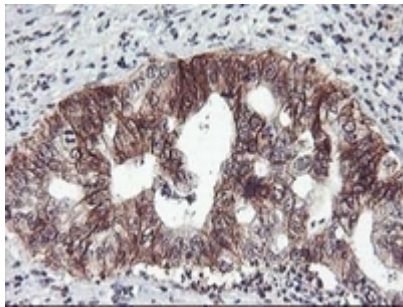
Immunohistochemical staining of paraffin-embedded Human endometrium tissue within the normal limits using anti-ZFP36 mouse monoclonal antibody. (Heat-induced epitope retrieval by 10mM citric buffer, pH6.0, 100°C for 10min)



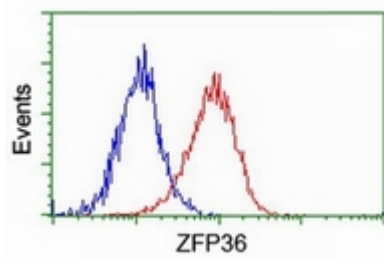
Western blot analysis of extracts (10ug) from 3 different cell lines by using anti-ZFP36 monoclonal antibody at 1:200 dilution.



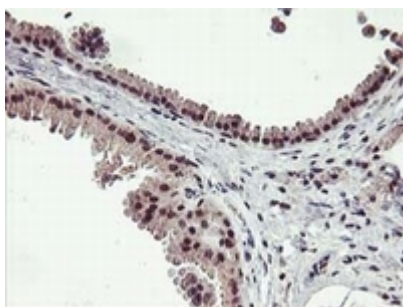
Immunohistochemical staining of paraffin-embedded Human tonsil within the normal limits using anti-ZFP36 mouse monoclonal antibody. (Heat-induced epitope retrieval by 10mM citric buffer, pH6.0, 100°C for 10min)



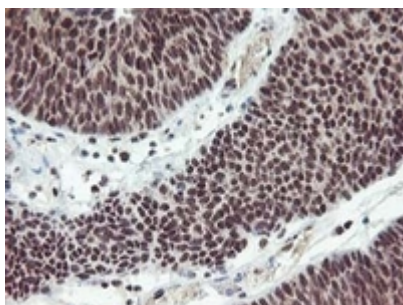
Immunohistochemical staining of paraffin-embedded Carcinoma of Human pancreas tissue using anti-ZFP36 mouse monoclonal antibody. (Heat-induced epitope retrieval by 10mM citric buffer, pH6.0, 100°C for 10min)



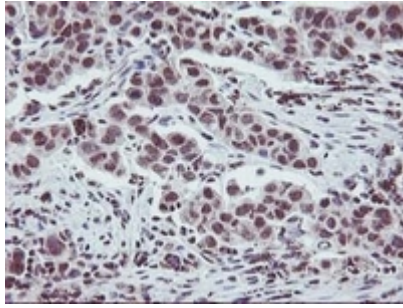
Flow cytometric Analysis of HeLa cells, using anti-ZFP36 antibody , (Red), compared to a nonspecific negative control antibody, (Blue).



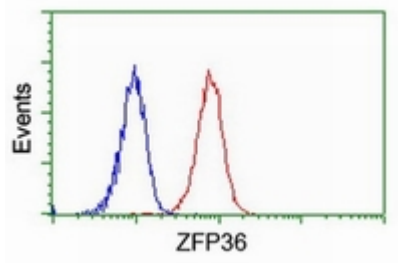
Immunohistochemical staining of paraffin-embedded Human breast tissue within the normal limits using anti-ZFP36 mouse monoclonal antibody. (Heat-induced epitope retrieval by 10mM citric buffer, pH6.0, 100°C for 10min)



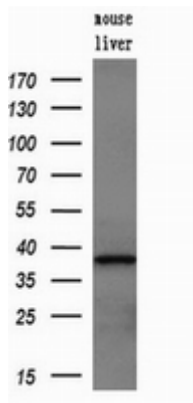
Immunohistochemical staining of paraffin-embedded Carcinoma of Human bladder tissue using anti-ZFP36 mouse monoclonal antibody. (Heat-induced epitope retrieval by 10mM citric buffer, pH6.0, 100°C for 10min)



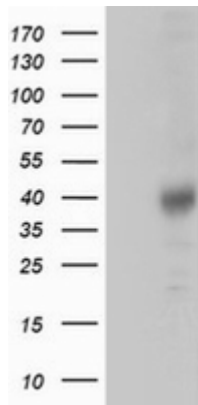
Immunohistochemical staining of paraffin-embedded Carcinoma of Human lung tissue using anti-ZFP36 mouse monoclonal antibody. (Heat-induced epitope retrieval by 10mM citric buffer, pH6.0, 100°C for 10min)



Flow cytometric Analysis of Jurkat cells, using anti-ZFP36 antibody, (Red), compared to a nonspecific negative control antibody, (Blue).



Western blot analysis of extracts (10ug) from a mouse tissue by using anti-ZFP36 monoclonal antibody (1:200).



HEK293T cells were transfected with the pCMV6-ENTRY control (Left lane) or pCMV6-ENTRY ZFP36 (Right lane) cDNA for 48 hrs and lysed. Equivalent amounts of cell lysates (5 ug per lane) were separated by SDS-PAGE and immunoblotted with anti-ZFP36.