

MG346654

TUBB1 monoclonal antibody



Order 021-34695924
orders@ab-mart.com
Support 400-6123-828
support1@ab-mart.com
Web www.ab-mart.com.cn

- 50ul
- 100 uL

UniProt : Q9H4B7

Alternative Names:

tubulin beta 1 class VI, TUBB1, beta 1; beta tubulin 1; class VI; dJ543J19.4; OTTHUMP00000031411; tubulin

Mol Weight() : 50.1 kDa

Isotype : Mouse IgG

Clonality : Mouse monoclonal

Source : Mouse

Reactivity : Human, Mouse, Rat

Purification:

Purified from mouse ascites fluids or tissue culture supernatant by affinity chromatography (protein A/G)

Storage Condition and Buffer:

PBS (PH 7.3) containing 1% BSA, 50% glycerol and 0.02% sodium azide.

Immunogen:

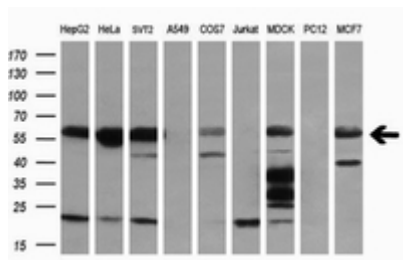
Full length human recombinant protein of human TUBB1(NP_110400) produced in HEK293T cell.

Content : 1 mg/ml

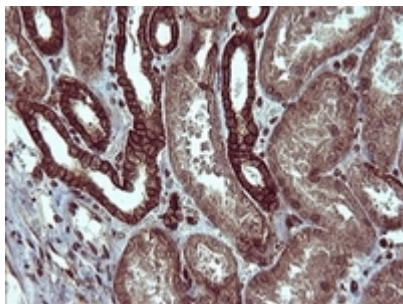
Application : IHC, WB

Dilution : WB 1:4000, IHC: 1:150

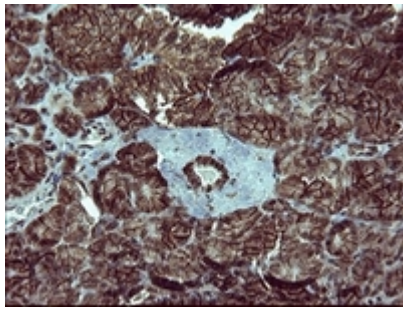
Image:



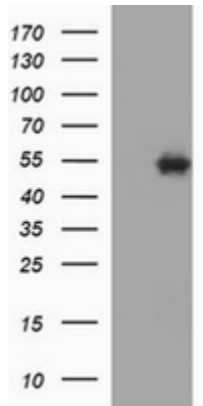
Western blot analysis of extracts (35ug) from 9 different cell lines by using anti-TUBB1 monoclonal antibody (HepG2: human; HeLa: human; SVT2: mouse; A549: human; COS7: monkey; Jurkat: human; MDCK: canine; PC12: rat; MCF7: human) (1:200).



Immunohistochemical staining of paraffin-embedded Human Kidney tissue within the normal limits using anti-TUBB1 mouse monoclonal antibody.



Immunohistochemical staining of paraffin-embedded Human pancreas tissue within the normal limits using anti-TUBB1 mouse monoclonal antibody.



HEK293T cells were transfected with the pCMV6-ENTRY control (Left lane) or pCMV6-ENTRY TUBB1 (Right lane) cDNA for 48 hrs and lysed. Equivalent amounts of cell lysates (5 ug per lane) were separated by SDS-PAGE and immunoblotted with anti-TUBB1.