

MG936283

YBX1 monoclonal antibody



- 50ul
- 100 uL

Order 021-34695924
orders@ab-mart.com

Support 400-6123-828
support1@ab-mart.com

Web www.ab-mart.com.cn

UniProt : P67809

Alternative Names:

Y-box binding protein 1, YBX1, BP-8; CBF-A; CSDA2; CSDB; DBPB; EFI-A; MDR-NF1; NSEP-1; NSEP1; YB-1; YB1

Mol Weight() : 35.7 kDa

Isotype : Mouse IgG

Clonality : Mouse monoclonal

Source : Mouse

Reactivity : Human, Mouse, Rat

Purification:

Purified from mouse ascites fluids or tissue culture supernatant by affinity chromatography (protein A/G)

Storage Condition and Buffer:

PBS (PH 7.3) containing 1% BSA, 50% glycerol and 0.02% sodium azide.

Immunogen:

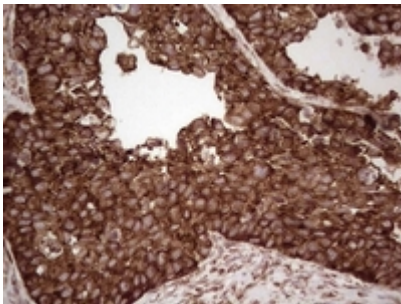
Full length human recombinant protein of human YBX1 (NP_004550) produced in E.coli.

Content : 1 mg/ml

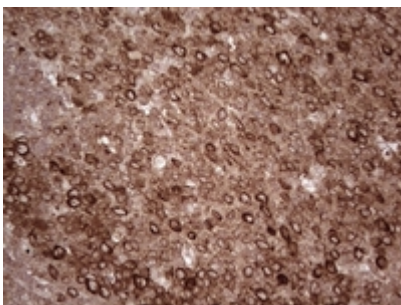
Application : IHC, WB

Dilution : WB 1:2000, IHC 1:150

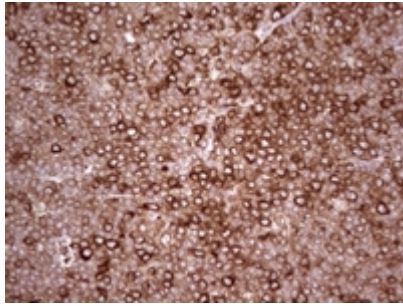
Image:



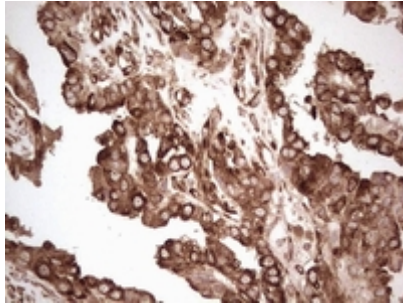
Immunohistochemical staining of paraffin-embedded Carcinoma of Human kidney tissue using anti-YBX1 mouse monoclonal antibody. (Heat-induced epitope retrieval by 1mM EDTA in 10mM Tris, pH8.5, 120°C for 3min)



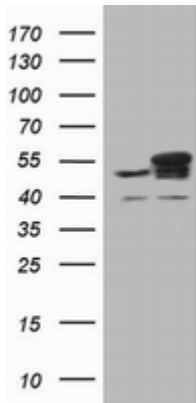
Immunohistochemical staining of paraffin-embedded Human tonsil within the normal limits using anti-YBX1 mouse monoclonal antibody. (Heat-induced epitope retrieval by 1mM EDTA in 10mM Tris, pH8.5, 120°C for 3min)



Immunohistochemical staining of paraffin-embedded Human lymphoma tissue using anti-YBX1 mouse monoclonal antibody. (Heat-induced epitope retrieval by 1mM EDTA in 10mM Tris, pH8.5, 120°C for 3min)



Immunohistochemical staining of paraffin-embedded Adenocarcinoma of Human ovary tissue using anti-YBX1 mouse monoclonal antibody. (Heat-induced epitope retrieval by 1mM EDTA in 10mM Tris, pH8.5, 120°C for 3min)



HEK293T cells were transfected with the pCMV6-ENTRY control (Left lane) or pCMV6-ENTRY YBX1 (Right lane) cDNA for 48 hrs and lysed. Equivalent amounts of cell lysates (5 ug per lane) were separated by SDS-PAGE and immunoblotted with anti-YBX1.