

PS04989

Anti-LILRB4 Antibody

Abmart

Order 021-34695924
orders@ab-mart.com
Support 400-6123-828
support1@ab-mart.com
Web www.ab-mart.com.cn

50ul;100ul;

Description:

This gene is a member of the leukocyte immunoglobulin-like receptor (LIR) family, which is found in a gene cluster at chromosomal region 19q13.4. The encoded protein belongs to the subfamily B class of LIR receptors which contain two or four extracellular immunoglobulin domains, a transmembrane domain, and two to four cytoplasmic immunoreceptor tyrosine-based inhibitory motifs (ITIMs). The receptor is expressed on immune cells where it binds to MHC class I molecules on antigen-presenting cells and transduces a negative signal that inhibits stimulation of an immune response. The receptor can also function in antigen capture and presentation. It is thought to control inflammatory responses and cytotoxicity to help focus the immune response and limit autoreactivity. Multiple transcript variants encoding different isoforms have been found for this gene.

Alternative Names : CD85K,ILT-3,ILT3,LIR-5,LIR5

Gene Symbol : 11006

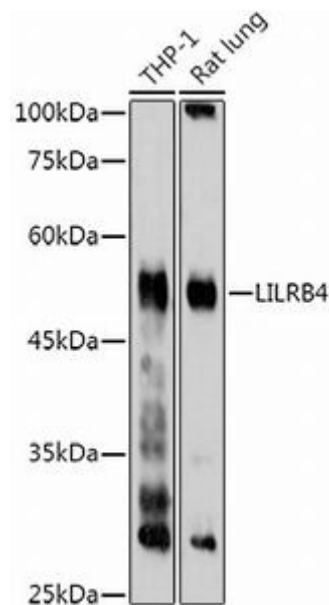
Uniprot : Q8NHJ6

Uniprot link:

<https://www.uniprot.org/uniprotkb/Q8NHJ6>

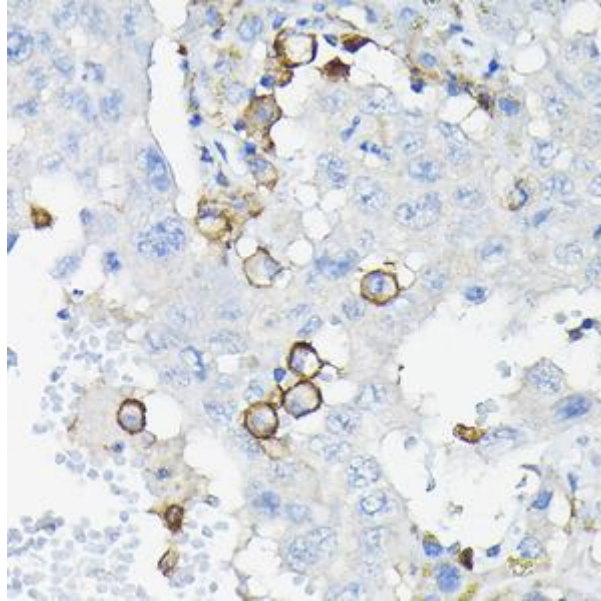
Application

WB



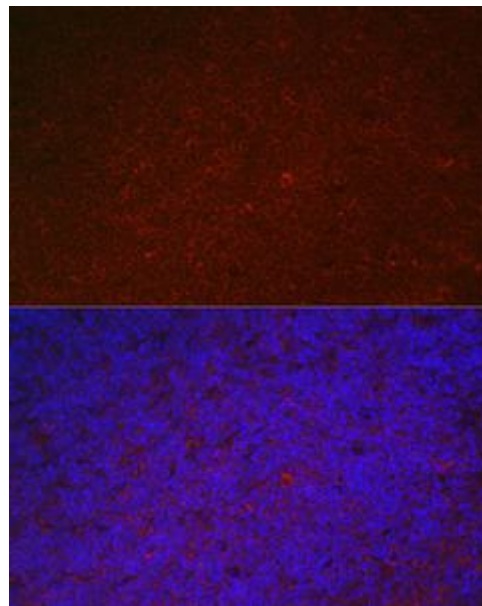
Western blot analysis with LILRB4 antibody diluted at 1:1000;Lane: THP-1,Rat lung.

IHC



Immunohistochemistry of paraffin-embedded human liver cancer with LILRB4 antibody diluted at 1:100.

IF



Immunofluorescence analysis of mouse spleen using LILRB4 antibody diluted at 1:100.

Dilution:

WB 1:500-2000. IHC 1:50-200. IF 1:50-200

Subcellular location : Transmembrane

Mol Weight : 49kDa

Source : Rabbit

Clonality : Polyclonal Antibody

Isotype : IgG

Immunogen : Recombinant protein of human LILRB4

Reactivity : Human Mouse Rat

Purification : Affinity purification

Buffer:

Buffer: PBS with 0.02% sodium azide, 50% glycerol, pH7.3.

Storage : Store at -20°C. Avoid freeze / thaw cycles.