

PS16659

Anti-RPS6KB1 Antibody



Order 021-34695924
orders@ab-mart.com
Support 400-6123-828
support1@ab-mart.com
Web www.ab-mart.com.cn

50ul;100ul;

Description:

Serine/threonine-protein kinase that acts downstream of mTOR signaling in response to growth factors and nutrients to promote cell proliferation, cell growth and cell cycle progression. Regulates protein synthesis through phosphorylation of EIF4B, RPS6 and EEF2K, and contributes to cell survival by repressing the pro-apoptotic function of BAD.

Alternative Names:

p70S6KA;p70(S6K)-alpha;p70-alpha;p70-S6K;PS6K;S6K;S6K-beta-1;S6K1;STK14A

Gene Symbol : 6198

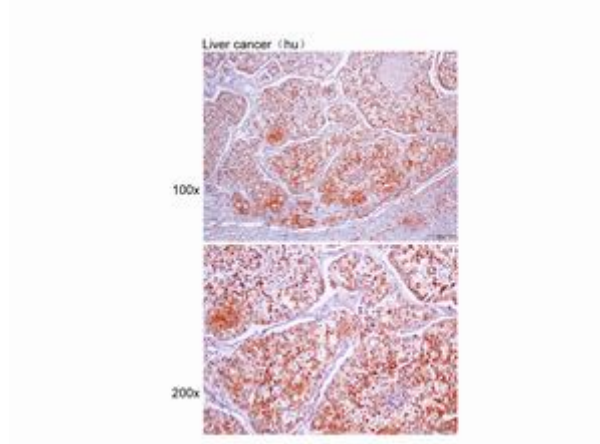
Uniprot : P23443

Uniprot link:

<https://www.uniprot.org/uniprotkb/P23443>

Application

IHC



Immunohistochemistry of paraffin-embedded Liver cancer(hu) using RPS6KB1 at dilution of 1:25.

Dilution : WB 1:500-1000. IHC 1:20-50.

Mol Weight : 59kDa

Source : Rabbit

Clonality : Polyclonal Antibody

Isotype : IgG

Immunogen : A synthetic peptide of human RPS6KB1

Immunogen Range : 1-51/525aa

Reactivity : Human;Mouse

Subcellular location Info : Cytoplasm Nucleus

Purification : Affinity purification

Buffer:

Buffer: PBS with 0.03% Proclin300, 50% glycerol, pH7.3.

Storage : Store at -20°C. Avoid freeze / thaw cycles.