

PS16666

Anti-CD22 Antibody



Order 021-34695924
orders@ab-mart.com
Support 400-6123-828
support1@ab-mart.com
Web www.ab-mart.com.cn

50ul;100ul;

Description:

Mediates B-cell B-cell interactions. May be involved in the localization of B-cells in lymphoid tissues. Binds sialylated glycoproteins; one of which is CD45. Preferentially binds to alpha-2,6-linked sialic acid. The sialic acid recognition site can be masked by cis interactions with sialic acids on the same cell surface.

Alternative Names : SIGLEC2;BL-CAM;Leu-14;FLJ22814;MGC130020

Gene Symbol : 933

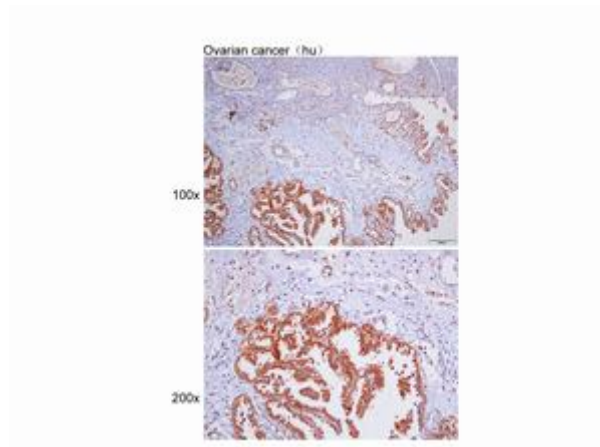
Uniprot : P20273

Uniprot link:

<https://www.uniprot.org/uniprotkb/P20273>

Application

IHC



Immunohistochemistry of paraffin-embedded Lung cancer(hu) using TIF1 beta at dilution of 1:50.

Dilution : IHC 1:25-100.

Mol Weight : 95kDa

Source : Rabbit

Clonality : Polyclonal Antibody

Isotype : IgG

Immunogen : A synthetic peptide of human CD22

Immunogen Range : 55-105/847aa

Reactivity : Human

Subcellular location Info:

Cell membrane Single-pass type I membrane protein

Purification : Affinity purification

Buffer:

Buffer: PBS with 0.03% Proclin300, 50% glycerol, pH7.3.

Storage : Store at -20°C. Avoid freeze / thaw cycles.