

PS16675

Anti-SLC10A1 Antibody

Abmart

Order 021-34695924
orders@ab-mart.com
Support 400-6123-828
support1@ab-mart.com
Web www.ab-mart.com.cn

50ul;100ul;

Description:

The protein encoded by this gene belongs to the sodium/bile acid cotransporter family, which are integral membrane glycoproteins that participate in the enterohepatic circulation of bile acids. Two homologous transporters are involved in the reabsorption of bile acids; the ileal sodium/bile acid cotransporter with an apical cell localization that absorbs bile acids from the intestinal lumen, bile duct and kidney, and the liver-specific sodium/bile acid cotransporter, represented by this protein, that is found in the basolateral membranes of hepatocytes. Bile acids are the catabolic product of cholesterol metabolism, hence this protein is important for cholesterol homeostasis.

Alternative Names:

NTCP;GIG29;Solute carrier family 10 member 1;NTCP1

Gene Symbol : 6554

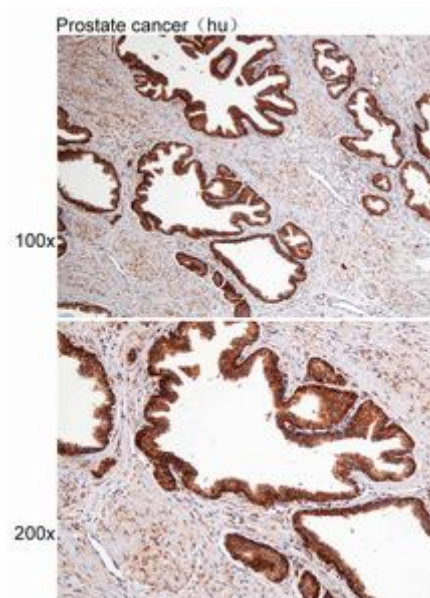
Uniprot : Q14973

Uniprot link:

<https://www.uniprot.org/uniprotkb/Q14973>

Application

IHC



Immunohistochemistry of paraffin-embedded Prostate cancer(hu) using SLC10A1 at dilution of 1:50.

Dilution : IHC 1:25-100.

Subcellular location : Transmembrane

Mol Weight : 38kDa

Source : Rabbit

Clonality : Polyclonal Antibody

Isotype : IgG

Immunogen : A synthetic peptide of human SLC10A1

Immunogen Range : 135-185/349aa

Reactivity : Human;Mouse;Rat

Purification : Affinity purification

Buffer:

Buffer: PBS with 0.03% Proclin300, 50% glycerol, pH7.3.

Storage : Store at -20°C. Avoid freeze / thaw cycles.