

RMCH018

Recombinant IL-17A (Interleukin-17A), Human , AF

 5ug;20ug;100ug;500ug;

Order	021-34695924 orders@ab-mart.com
Support	400-6123-828 support1@ab-mart.com
Web	www.ab-mart.com.cn

Synonym/Alternative name(s) : CTLA-8**Activity:**

Measure by its ability to induce IL-6 secretion in 3T3 cells.

The ED50 for this effect is <6 ng/mL.

Protein Description:

Interleukin-17A is a protein that in humans is encoded by the IL17A gene. The protein encoded by this gene is a proinflammatory cytokine produced by activated T cells. This cytokine regulates the activities of NF-kappaB and mitogen-activated protein kinases. This cytokine can stimulate the expression of IL6 and cyclooxygenase-2 (PTGS2/COX-2), as well as enhance the production of nitric oxide (NO).

Protein Accession : Q16552.1**Gene ID :** 3605**Expression Sequence:**

MIVKAGITIPRNP GCPNSEDKNFPRTVMVNLNIHNRNTNTNPKRSSDYNRSTSPWNLHRNEDPERYPSVIWEAKCRHLGCINADGNV
DYHMNSVPIQQEILVLRREPPHCPNSFRLEKILVSVGCTCVTPIVHHVA with polyhistidine tag at the C-terminus.

Fusion tag : His-tag?at?the?C-terminus**Species :** Human**Reactivity :** Human**Expression Host :** Escherichia coli**Source :** E. coli**Purity/method:**

>98% as determined by SDS-PAGE. Ni-NTA chromatography

Endotoxin level:

<0.01 EU per 1 µg of the protein by the LAL method.

Calculated Molecular Weight : 16.47 kDa**Formulation:**

The protein was lyophilized from a solution containing 1X PBS, pH 8.0.

Reconstitution:

It is recommended to reconstitute the lyophilized protein in sterile H2O to a concentration not less than 100 µg/mL and incubate the stock solution for at least 20 min to ensure sufficient re-dissolved.

Shipping : Blue Ice**Stability and Storage:**

Lyophilized protein should be stored at -20°C for 1 year.

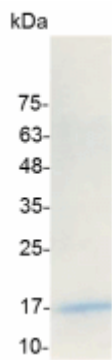
Upon reconstitution, store at 2°C to 8°C for up to 1 week. Further dilute in a buffer containing a carrier protein or stabilizer (e.g. 0.1%

BSA, 10%FBS, 5%HSA or 5% trehalose solution), protein aliquots should be stored at -20°C or -80°C for 3-6 months.

Category : Cytokines

Application : Cell culture, Elisa

Image:



SDS- PAGE analysis of recombinant human IL-17A