

RMCH022

Recombinant IL-18 (Interleukin-18), Human , AF

 5ug;20ug;100ug;500ug;

Order	021-34695924 orders@ab-mart.com
Support	400-6123-828 support1@ab-mart.com
Web	www.ab-mart.com.cn

Synonym/Alternative name(s) : IGIF, IL-1g, IL1F4**Activity:**

Measure by its ability to induce IFN gamma secretion in KG-1 cells.

The ED50 for this effect is <5 ng/mL.

Protein Description:

Interleukin-18 (L-18) is a cytokine that belongs to the IL-1 superfamily and is produced by macrophages and other cells. IL-18 works by binding to the interleukin-18 receptor, and together with IL-12 it induces cell-mediated immunity following infection with microbial products like lipopolysaccharide (LPS). After stimulation with IL-18, natural killer (NK) cells and certain T cells release another important cytokine called interferon- γ (IFN- γ) or type II interferon that plays an important role in activating the macrophages or other cells. The combination of this cytokine and IL12 has been shown to inhibit IL-4 dependent IgE and IgG1 production, and enhance IgG2a production in B cells. IL-18 binding protein (IL18BP) can specifically interact with this cytokine, and thus negatively regulate its biological activity.

Protein Accession : Q14116.1**Gene ID :** 3606**Expression Sequence:**

MYFGKLESKLSVIRNLNDQVLFDIQGNRPLFEDMTDSDCRDNAPRTIFIISMYSQPRGMAVTISVKCEKISTLSCENKIISFKEMNPPD
NIKDKTSDIIFQRSVPGHDNKMQFESSYEGYFLACEKERDLFKLILKKEDELGDRSIMFTVQNEQ with polyhistidine tag at the C-terminus.

Fusion tag : His-tag?at?the?C-terminus**Species :** Human**Reactivity :** Human**Expression Host :** Escherichia coli**Source :** E. coli**Purity/method:**

>98% as determined by SDS-PAGE. Ni-NTA chromatography

Endotoxin level:<0.1 EU per 1 μ g of the protein by the LAL method.**Calculated Molecular Weight :** 19.2 kDa**Formulation:**

The protein was lyophilized from a solution containing 1X PBS, pH 8.0.

Reconstitution:It is recommended to reconstitute the lyophilized protein in sterile H₂O to a concentration not less than 100 μ g/mL and incubate the stock solution for at least 20 min to ensure sufficient re-dissolved.**Shipping :** Blue Ice**Stability and Storage:**

Lyophilized protein should be stored at -20°C for 1 year.

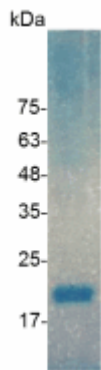
Upon reconstitution, store at 2°C to 8°C for up to 1 week. Further dilute in a buffer containing a carrier protein or stabilizer (e.g. 0.1%

BSA, 10%FBS, 5%HSA or 5% trehalose solution), protein aliquots should be stored at -20°C or -80°C for 3-6 months.

Category : Cytokines

Application : Cell culture, Elisa

Image:



SDS- PAGE analysis of recombinant human IL-18