

**RMCH025**

Recombinant IL-21 (Interleukin-21), Human , AF



<b>Order</b>	021-34695924 orders@ab-mart.com
<b>Support</b>	400-6123-828 support1@ab-mart.com
<b>Web</b>	www.ab-mart.com.cn

 5ug;20ug;100ug;500ug;**Synonym/Alternative name(s) : Za11****Activity:**

Measure by its ability to enhance IFN gamma secretion in NK-92 cells.

The ED50 for this effect is <10 ng/mL.

**Protein Description:**

Interleukin-21 (IL21) belongs to the IL-15/IL-21 family. It is a cytokine with immunoregulatory activity. Cytokines are proteinaceous signaling compounds that are major mediators of the immune response. They control many different cellular functions including proliferation, differentiation and cell survival/apoptosis but are also involved in several pathophysiological processes including viral infections and autoimmune diseases. Interleukin-21 is a cytokine that has potent regulatory effects on cells of the immune system, including natural killer (NK) cells and cytotoxic T cells that can destroy virally infected or cancerous cells. This cytokine induces cell division/proliferation in its target cells.

**Protein Accession :** Q9HBE4.3

**Gene ID :** 59067

**Expression Sequence:**

MQDRHMIRMRLIDIVDQLKNYVNDLVPEFLPAPEDVETNCEWSAFSCFQKAQLKSANTGNNERIINVSIKLKRKPPSTNAGRQKH  
RLTCPSCDSYEKPPKEFLERFKSLQKMIHQHLSRTHGSEDS with polyhistidine tag at the C-terminus.

**Fusion tag :** His-tag?at?the?C-terminus

**Species :** Human

**Reactivity :** Human

**Expression Host :** Escherichia coli

**Source :** E. coli

**Purity/method:**

>95% as determined by SDS-PAGE.

Ni-NTA chromatography.

**Endotoxin level:**

<0.1 EU per 1 µg of the protein by the LAL method.

**Calculated Molecular Weight :** 16.2 kDa

**Formulation:**

The protein was lyophilized from a solution containing 1X PBS, pH 8.0.

**Reconstitution:**

It is recommended to reconstitute the lyophilized protein in sterile H2O to a concentration not less than 100 µg/mL and incubate the stock solution for at least 20 min to ensure sufficient re-dissolved.

**Shipping :** Blue Ice

**Stability and Storage:**

Lyophilized protein should be stored at -20°C for 1 year.

Upon reconstitution, store at 2°C to 8°C for up to 1 week. Further dilute in a buffer containing a carrier protein or

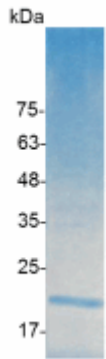
stabilizer (e.g. 0.1%

BSA, 10%FBS, 5%HSA or 5% trehalose solution), protein aliquots should be stored at -20°C or -80°C for 3-6 months.

**Category :** Cytokines

**Application :** Cell culture, Elisa

**Image:**



SDS- PAGE analysis of recombinant human IL-21