

RMCH052

Recombinant CD30L (CD30 ligand), Human , AF

 5ug;20ug;100ug;500ug;

Order	021-34695924 orders@ab-mart.com
Support	400-6123-828 support1@ab-mart.com
Web	www.ab-mart.com.cn

Synonym/Alternative name(s):

soluble CD30 Ligand, TNFSF8, CD153, sCD30 Ligand

Activity:

Measure by its ability to induce IL-8 secretion in human PBMCs.

The ED50 for this effect is <2 ng/mL.

Protein Description:

CD30L is a member of the TNF superfamily, and is a type-II membrane-associated glycoprotein. It is primarily expressed on certain B cells, T cells, and monocytes. In lymphomas and various chronically inflamed tissues, CD30L can specifically bind to CD30 (receptor), which is expressed on activated, but not resting, B and T cells. CD30L can interact with CD30 to start a signaling cascade that can finally lead to the activation of NF- κ B. CD30L/CD30 signaling applies pleiotropic effects on normal cells, for example: cell death, differentiation, and cell division. CD30L/CD30 signaling can also affect some kinds of diseases, like Hodgkin's lymphoma, allergic inflammation, diabetes and mycobacterial infection.

Protein Accession : P32971**Gene ID :** 944**Expression Sequence:**

MQRTDSIPNSPDNVPLKGGNCSEDLLCILKRAPFKKSWAYLQVAKHLNKTLSWLNKDGILHGVRYQDGNLVIQFPGLYFICQLQFLVQ
CPNNSVDLKLLELLINKHIKKALVTVCESGMQTKHVYQNLSQLLDYLVQNTTISVNVDTFQYIDTSTFPLENVLSIFLYSNSD with
polyhistidine tag at the C-terminus.

Fusion tag : His-tag?at?the?C-terminus**Species :** Human**Reactivity :** Human**Expression Host :** Escherichia coli**Source :** E. coli**Purity/method:**

>98% as determined by SDS-PAGE. Ni-NTA chromatography

Endotoxin level:<0.01 EU per 1 μ g of the protein by the LAL method.**Calculated Molecular Weight :** 20.57 kDa**Formulation:**

The protein was lyophilized from a solution containing 1X PBS, pH 7.4.

Reconstitution:It is recommended to reconstitute the lyophilized protein in sterile H₂O to a concentration not less than 100 μ g/mL and incubate the stock solution for at least 20 min to ensure sufficient re-dissolved.**Shipping :** Blue Ice**Stability and Storage:**

Lyophilized protein should be stored at -20°C for 1 year.

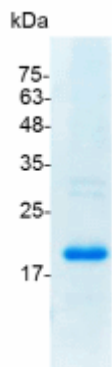
Upon reconstitution, store at 2°C to 8°C for up to 1 week. Further dilute in a buffer containing a carrier protein or stabilizer (e.g. 0.1%

BSA, 10%FBS, 5%HSA or 5% trehalose solution), protein aliquots should be stored at -20°C or -80°C for 3-6 months.

Category : Cytokines

Application : Cell culture, Elisa

Image:



SDS- PAGE analysis of recombinant human CD30L