

RMCH075

Recombinant BMP-13 (Bone morphogenetic protein-13),
Human , AF



Order 021-34695924
orders@ab-mart.com
Support 400-6123-828
support1@ab-mart.com
Web www.ab-mart.com.cn

5ug;20ug;100ug;500ug;

Synonym/Alternative name(s):

subunit (CLMF p35), NK cell Stimulating Factor Chain 1

Activity:

Measure by its ability to induce alkaline phosphatase production by ATDC5 cells.

The ED50 for this effect is 63-240 ng/mL.

Protein Description:

Bone morphogenetic proteins (BMPs) are a group of growth factors also known as cytokines and as metabologens. BMP13 is a growth factor which controls proliferation and cellular differentiation in the retina and bone formation. BMP13 has a central role in regulating apoptosis during retinal development.

Protein Accession : Q6KF10.1

Gene ID : 392255

Expression Sequence:

MTAFASRHGKRHGKKSRLRCSKPLHVNFKELGWDDWIIAPLEYEAYHCEGVCDPFLRSHLEPTNHAIQTLMNSMDPGSTPPSCCVPT
KLTPISILYIDAGNNVVYKQYEDMVVESCGR with polyhistidine tag at the C-terminus.

Fusion tag : His-tag?at?the?C-terminus

Species : Human

Reactivity : Human

Expression Host : Escherichia coli

Source : E. coli

Purity/method:

>98% as determined by SDS-PAGE. Ni-NTA chromatography

Endotoxin level:

<0.1 EU per 1 µg of the protein by the LAL method.

Calculated Molecular Weight : 14.50 kDa

Formulation:

The protein was lyophilized from a solution containing 20 mM sodium citrate, 0.2 M NaCl, pH 3.5.

Reconstitution:

It is recommended to reconstitute the lyophilized protein in sterile H₂O to a concentration not less than 100 µg/mL and incubate the stock solution for at least 20 min to ensure sufficient re-dissolved.

Shipping : Blue Ice

Stability and Storage:

Lyophilized protein should be stored at -20°C for 1 year.

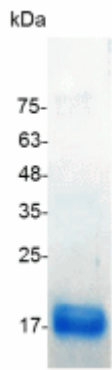
Upon reconstitution, store at 2°C to 8°C for up to 1 week. Further dilute in a buffer containing a carrier protein or stabilizer (e.g. 0.1%

BSA, 10%FBS, 5%HSA or 5% trehalose solution), protein aliquots should be stored at -20°C or -80°C for 3-6 months.

Category : Cytokines

Application : Cell culture, Elisa

Image:



SDS- PAGE analysis of recombinant human BMP-13