

**RMCH088**

Recombinant TGF beta 1 (Transforming growth factor beta 1), Human ,AF



5ug;20ug;100ug;500ug;

<b>Order</b>	021-34695924 orders@ab-mart.com
<b>Support</b>	400-6123-828 support1@ab-mart.com
<b>Web</b>	www.ab-mart.com.cn

**Synonym/Alternative name(s):**

Differentiation inhibiting factor, Cartilage-inducing factor, CED, DPD1, IBDIMDE, LAP, TGFB

**Activity:**

Measure by its ability to inhibit the IL-4 dependent proliferation in HT-2 cells.

The ED50 for this effect is <0.1 ng/mL.

The specific activity of recombinant human TGF beat 1 is approximately >5 x 10<sup>7</sup> IU/mg.

Measure by its ability to induce proliferation in MCF-7 cells.

The ED50 for this effect is <3.2 ng/mL.

**Protein Description:**

Transforming growth factor beta 1 or TGF-β1 is a polypeptide member of the transforming growth factor beta superfamily of cytokines. It is a secreted protein that performs many cellular functions, including the control of cell growth, cell proliferation, cell differentiation, and apoptosis. In humans, TGF-β1 is encoded by the TGFB1 gene.

**Protein Accession :** P01137.2

**Gene ID :** 7040

**Expression Sequence:**

MALDTNYCFSSTEKNCCVRQLYIDFRKDLGWKWIHEPKGYHANFCLGPCPYIWSLDTQYSKVLALYNQHNPGASAAPCCVPQALEPLPI VYYVGRKPKVEQLSNMIVRSCCKCS with polyhistidine tag at the C-terminus.

**Fusion tag :** His-tag?at?the?C-terminus

**Species :** Human

**Reactivity :** Human

**Expression Host :** Escherichia coli

**Source :** E. coli

**Purity/method:**

>98% as determined by SDS-PAGE. Ni-NTA chromatography

**Endotoxin level:**

<0.1 EU per 1 µg of the protein by the LAL method.

**Calculated Molecular Weight :** 13.7 kDa

**Formulation:**

The protein was lyophilized from a solution containing 1X PBS, pH 8.0.

**Reconstitution:**

It is recommended to reconstitute the lyophilized protein in sterile H<sub>2</sub>O to a concentration not less than 100 µg/mL and incubate the stock solution for at least 20 min to ensure sufficient re-dissolved. In some experiments, it recommends to add 10 mM HCl when reconstitute lyophilized protein.

**Shipping :** Blue Ice

**Stability and Storage:**

Lyophilized protein should be stored at -20°C for 1 year.

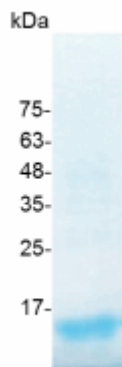
Upon reconstitution, store at 2°C to 8°C for up to 1 week. Further dilute in a buffer containing a carrier protein or stabilizer (e.g. 0.1%

BSA, 10%FBS, 5%HSA or 5% trehalose solution), protein aliquots should be stored at -20°C or -80°C for 3-6 months.

**Category :** Cytokines

**Application :** Cell culture, Elisa

**Image:**



SDS- PAGE analysis of recombinant human TGF beta 1