

RMCH110**Recombinant FGF-21 (Fibroblast growth factor-21), Human, AF** 5ug;20ug;100ug;500ug;

Order	021-34695924 orders@ab-mart.com
Support	400-6123-828 support1@ab-mart.com
Web	www.ab-mart.com.cn

Synonym/Alternative name(s) : FGFL**Activity:**

Measure by its ability to induce proliferation in BaF3 cells transfected with human FGFR11c.

The ED50 for this effect is <0.4 µg/mL.

Protein Description:

FGF-21 is a member of the fibroblast growth factor (FGF) family. FGF family members possess broad mitogenic and cell survival activities, and are involved in a variety of biological processes, including embryonic development, cell growth, morphogenesis, tissue repair, tumor growth and invasion. FGF-21 is produced by hepatocytes in response to free fatty acid (FFA) stimulation of a PPARα/RXR dimeric complex. This situation occurs clinically during starvation, or following the ingestion of a high-fat/low-carbohydrate diet. Upon FGF-21 secretion, white adipose tissue is induced to release FFAs from triglyceride stores. Once FFAs reach hepatocytes, they are oxidized and reduced to acetyl-CoA.

Protein Accession : Q9NSA1.1**Gene ID :** 26291**Expression Sequence:**

MHPIDSSPLLQFGGQVRQRYLYTDDAQQTEAHLEIREDDGTGGAADQSPESLLQLKALKPGVIQILGVKTSRFLCQRPDGALYGSLHFD
PEACSFRELLLEDGYNVYQSEAHGLPLHLPGNKSPHRDPAPRGPAPRFLPLPLPALPEPPGILAPQPPDVGSSDPLSMVGPSQGRSPSY
AS with polyhistidine tag at the C-terminus.

Fusion tag : His-tag?at?the?C-terminus**Species :** Human**Reactivity :** Human**Expression Host :** Escherichia coli**Source :** E. coli**Purity/method:**

>98% as determined by SDS-PAGE. Ni-NTA chromatography

Endotoxin level:

<0.1 EU per 1 µg of the protein by the LAL method.

Calculated Molecular Weight : 20.35 kDa**Formulation:**

The protein was lyophilized from a solution containing 1X PBS, pH 8.0.

Reconstitution:

It is recommended to reconstitute the lyophilized protein in sterile H2O to a concentration not less than 100 µg/mL and incubate the stock solution for at least 20 min to ensure sufficient re-dissolved.

Shipping : Blue Ice**Stability and Storage:**

Lyophilized protein should be stored at -20°C for 1 year.

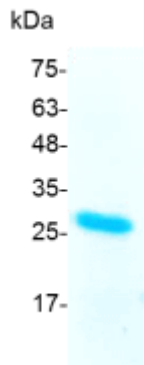
Upon reconstitution, store at 2°C to 8°C for up to 1 week. Further dilute in a buffer containing a carrier protein or stabilizer (e.g. 0.1%

BSA, 10%FBS, 5%HSA or 5% trehalose solution), protein aliquots should be stored at -20°C or -80°C for 3-6 months.

Category : Cytokines

Application : Cell culture, Elisa

Image:



SDS- PAGE analysis of recombinant human FGF-21