

RMCH113**Recombinant IGF-I (Insulin-like growth factor-I), Human, AF** 20ug;100ug;500ug;

Order	021-34695924 orders@ab-mart.com
Support	400-6123-828 support1@ab-mart.com
Web	www.ab-mart.com.cn

Synonym/Alternative name(s) : Somatamedin C, IGF-IA**Activity:**

Measure by its ability to induce MCF-7 cells proliferation.

The ED50 for this effect is 0.9-3.1 ng/mL.

The specific activity of recombinant human IGF-I is approximately $>1.2 \times 10^3$ IU/mg.

Protein Description:

Insulin-like growth factor 1 (IGF-1), also called somatomedin C, is a protein that in humans is encoded by the IGF1 gene. IGF-1 is a hormone similar in molecular structure to insulin. It plays an important role in childhood growth and continues to have anabolic effects in adults. A synthetic analog of IGF-1, mecasermin, is used for the treatment of growth failure.

Protein Accession : P05019.1**Gene ID :** 3479**Expression Sequence:**

MGPETLCGAELVDALQFVCGDRGFYFNKPTGYGSSRRAPQTGIVDECCFRSCDLRRLRLEMYCAPLKPAKSA with polyhistidine tag at the C-terminus.

Fusion tag : His-tag?at?the?C-terminus**Species :** Human**Reactivity :** Human**Expression Host :** Escherichia coli**Source :** E. coli**Purity/method:**

>95% as determined by SDS-PAGE.

Ni-NTA chromatography.

Endotoxin level:

<0.01 EU per 1 μ g of the protein by the LAL method.

Calculated Molecular Weight : 8.59 kDa**Formulation:**

The protein was lyophilized from a solution containing 1X PBS, pH 7.4.

Reconstitution:

It is recommended to reconstitute the lyophilized protein in sterile H₂O to a concentration not less than 100 μ g/mL and incubate the stock solution for at least 20 min to ensure sufficient re-dissolved.

Shipping : Blue Ice**Stability and Storage:**

Lyophilized protein should be stored at -20°C for 1 year.

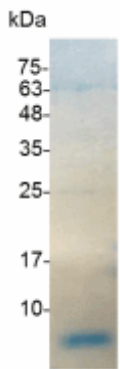
Upon reconstitution, store at 2°C to 8°C for up to 1 week. Further dilute in a buffer containing a carrier protein or stabilizer (e.g. 0.1%

BSA, 10%FBS, 5%HSA or 5% trehalose solution), protein aliquots should be stored at -20°C or -80°C for 3-6 months.

Category : Cytokines

Application : Cell culture, Elisa

Image:



SDS- PAGE analysis of recombinant human IGF-

I