

**RMCH114**

Recombinant IGF-II (Insulin-like growth factor-II),  
Human , AF



**Order** 021-34695924  
orders@ab-mart.com  
**Support** 400-6123-828  
support1@ab-mart.com  
**Web** www.ab-mart.com.cn

5ug;20ug;100ug;500ug;

**Synonym/Alternative name(s) :** Somatamedin A

**Activity:**

Measure by its ability to induce MCF-7 cells proliferation.

The ED50 for this effect is <3 ng/mL.

The specific activity of recombinant human IGF-II is > 3x 10<sup>5</sup> IU/mg.

**Protein Description:**

Insulin-like growth factor 2 (IGF-2) is one of three protein hormones that share structural similarity to insulin. The major role of IGF-2 is as a growth promoting hormone during gestation. It is believed to be a major fetal growth factor in contrast to Insulin-like growth factor 1, which is a major growth factor in adults.

**Protein Accession :** P01344.1

**Gene ID :** 3481

**Expression Sequence:**

AYRPSSETLCGGELVDTLQFVCGDRGFYFSRPASRVSRRSRGIVEECCFRSCDLALLETYCATPAKSE with polyhistidine tag at the N-terminus.

**Fusion tag :** His-tag?at?the?N-terminus

**Species :** Human

**Reactivity :** Human

**Expression Host :** Escherichia coli

**Source :** E. coli

**Purity/method:**

>98% as determined by SDS-PAGE. Ni-NTA chromatography

**Endotoxin level:**

<0.1 EU per 1 µg of the protein by the LAL method.

**Calculated Molecular Weight :** 8.28 kDa

**Formulation:**

The protein was lyophilized from a solution containing 1X PBS, pH 8.0.

**Reconstitution:**

It is recommended to reconstitute the lyophilized protein in sterile H<sub>2</sub>O to a concentration not less than 100 µg/mL and incubate the stock solution for at least 20 min to ensure sufficient re-dissolved.

**Shipping :** Blue Ice

**Stability and Storage:**

Lyophilized protein should be stored at -20°C for 1 year.

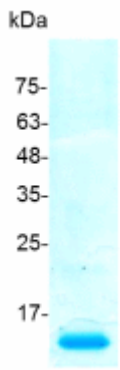
Upon reconstitution, store at 2°C to 8°C for up to 1 week. Further dilute in a buffer containing a carrier protein or stabilizer (e.g. 0.1%

BSA, 10%FBS, 5%HSA or 5% trehalose solution), protein aliquots should be stored at -20°C or -80°C for 3-6 months.

**Category :** Cytokines

**Application :** Cell culture, Elisa

**Image:**



SDS- PAGE analysis of recombinant human IGF-II