

RMCH115

Recombinant GM-CSF (Granulocyte-macrophage colony-stimulating factor), Human ,AF



5ug;20ug;100ug;500ug;

Order	021-34695924 orders@ab-mart.com
Support	400-6123-828 support1@ab-mart.com
Web	www.ab-mart.com.cn

Synonym/Alternative name(s):

colony stimulating factor 2, CSF2, CSF

Activity:

Measure by its ability to induce TF-1 cells proliferation.

The ED50 for this effect is <80 pg/mL.

The specific activity of recombinant human GM-CSF is approximately >1 x 10⁷ IU/mg.

Protein Description:

Granulocyte-macrophage colony-stimulating factor (GM-CSF), also known as colony-stimulating factor 2 (CSF2), is a monomeric glycoprotein secreted by macrophages, T cells, mast cells, natural killer cells, endothelial cells and fibroblasts that functions as a cytokine. GM-CSF also plays a role in embryonic development by functioning as an embryokine produced by reproductive tract.

Protein Accession : P04141.1

Gene ID : 1437

Expression Sequence:

APARSPSPSTQPWEHVNAIQEARRLLNLSRDAAEMNETVEISEMFDLQEPCLQTRLELYKQGLRGLSLTKLKGPLTMMASHYKQHC
PPTPETSCATQITFESFKENLKDFFLLVIPFDCWEPVQE with polyhistidine tag at the N-terminus.

Fusion tag : His-tag?at?the?N-terminus

Species : Human

Reactivity : Human

Expression Host : Escherichia coli

Source : E. coli

Purity/method:

>98% as determined by SDS-PAGE. Ni-NTA chromatography

Endotoxin level:

<0.1 EU per 1 µg of the protein by the LAL method.

Calculated Molecular Weight : 15.4 kDa

Formulation:

The protein was lyophilized from a solution containing 1X PBS, pH 8.0.

Reconstitution:

It is recommended to reconstitute the lyophilized protein in sterile H₂O to a concentration not less than 100 µg/mL and incubate the stock solution for at least 20 min to ensure sufficient re-dissolved.

Shipping : Blue Ice

Stability and Storage:

Lyophilized protein should be stored at -20°C for 1 year.

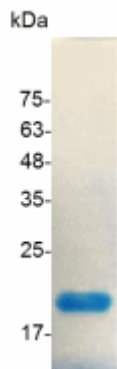
Upon reconstitution, store at 2°C to 8°C for up to 1 week. Further dilute in a buffer containing a carrier protein or stabilizer (e.g. 0.1%

BSA, 10%FBS, 5%HSA or 5% trehalose solution), protein aliquots should be stored at -20°C or -80°C for 3-6 months.

Category : Cytokines

Application : Cell culture, Elisa

Image:



SDS- PAGE analysis of recombinant human GM-CSF