

RMCH116

Recombinant M-CSF (Macrophage colony stimulating factor), Human ,AF



Order	021-34695924 orders@ab-mart.com
Support	400-6123-828 support1@ab-mart.com
Web	www.ab-mart.com.cn

5ug;20ug;100ug;500ug;

Synonym/Alternative name(s) : CSF-1, MGI-IM

Activity:

Measure by its ability to induce proliferation in NFS-60 cells.

The ED50 for this effect is <1 ng/mL.

The specific activity of recombinant human M-CSF is approximately >2.5x 10⁸ IU/mg.

Protein Description:

Macrophage Colony-Stimulating Factor (M-CSF), is a secreted cytokine which causes hematopoietic stem cells to differentiate into macrophages or other related cell types. The active form of M-CSF/CSF-1 is found extracellularly as a disulfide-linked homodimer, and is thought to be produced by proteolytic cleavage of membrane-bound precursors. M-CSF/CSF-1 induces cells of the monocyte/macrophage lineage. It also plays a role in immunological defenses, bone metabolism, lipoproteins clearance, fertility and pregnancy. Upregulation of M-CSF/CSF-1 in the infarcted myocardium may have an active role in healing not only through its effects on cells of monocyte/macrophage lineage, but also by regulating endothelial cell chemokine expression.

Protein Accession : P09603.2

Gene ID : 1435

Expression Sequence:

MEEVSEYCSHMIGSGHLQSLQRLIDSQMETSCQITFEFVDQEQLKDPVCYLKKAFLLVQDIMEDTMRFRDNTPNIAIAIVQLQELSLRLKS
CFTKDYEEHDKACVTRTFYETPLQLLEKVKNVFNETKNLLDKDWNIFSKNCNNSFAECSSQGHERQSEGS with polyhistidine tag at the C-terminus.

Fusion tag : His-tag?at?the?C-terminus

Species : Human

Reactivity : Human

Expression Host : Escherichia coli

Source : E. coli

Purity/method:

>98% as determined by SDS-PAGE. Ni-NTA chromatography

Endotoxin level:

<0.1 EU per 1 µg of the protein by the LAL method.

Calculated Molecular Weight : 13.34 kDa

Formulation:

The protein was lyophilized from a solution containing 1X PBS, pH 7.4.

Reconstitution:

It is recommended to reconstitute the lyophilized protein in sterile H₂O to a concentration not less than 100 µg/mL and incubate the stock solution for at least 20 min to ensure sufficient re-dissolved.

Shipping : Blue Ice

Stability and Storage:

Lyophilized protein should be stored at -20°C for 1 year.

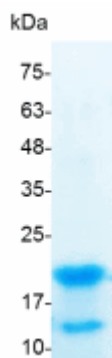
Upon reconstitution, store at 2°C to 8°C for up to 1 week. Further dilute in a buffer containing a carrier protein or stabilizer (e.g. 0.1%

BSA, 10%FBS, 5%HSA or 5% trehalose solution), protein aliquots should be stored at -20°C or -80°C for 3-6 months.

Category : Cytokines

Application : Cell culture, Elisa

Image:



SDS- PAGE analysis of recombinant human M-CSF