

RMCH118

Recombinant Activin A, Human/Mouse/Rat , AF

 5ug;20ug;100ug;500ug;

| | |
|----------------|--------------------------------------|
| Order | 021-34695924 orders@ab-mart.com |
| Support | 400-6123-828 support1@ab-mart.com |
| Web | www.ab-mart.com.cn |

Synonym/Alternative name(s):

Inhibin beta A chain, Activin beta-A chain, Erythroid differentiation protein

Activity:

Measure by its ability to induce hemoglobin expression in K562 cells.

The ED50 for this effect is <0.85 ng/mL.

The specific activity of recombinant human Activin A is approximately >1.4 x 10³ IU/mg.**Protein Description:**

Activin and Inhibin are members of the TGF-beta superfamily of cytokines and are involved in a wide range of biological processes including tissue morphogenesis and repair, fibrosis, inflammation, neural development, hematopoiesis, reproductive system function, and carcinogenesis. Activin is strongly expressed in wounded skin, and overexpression of activin in epidermis of transgenic mice improves wound healing and enhances scar formation. Activin also regulates the morphogenesis of branching organs such as the prostate, lung, and kidney. There is also evidence showed that lack of activin during development results in neural developmental defects.

Protein Accession:

P08476(Human), Q04998 (Mouse), P18331(Rat)

Gene ID : 3624(Human), 16323(Mouse), 29200(Rat)**Expression Sequence:**MGLECDGKVNICKKQFFVSKDIGWNDWIIAPSGYHANYCEGECPSHIAGTSGSSLSFHSTVINHYRMRGHSPFANLKSCCVPTKLRP
MSMLYYDDGQNIKKDIQNMIVEECGCS with polyhistidine tag at the C-terminus.**Fusion tag :** His-tag?at?the?C-terminus**Species :** Human/Mouse/Rat**Reactivity :** Human Mouse Rat**Expression Host :** Escherichia coli**Source :** E. coli**Purity/method:**

>95% as determined by SDS-PAGE.

Ni-NTA chromatography.

Endotoxin level:

<0.1 EU per 1 µg of the protein by the LAL method.

Calculated Molecular Weight : 13.9 kDa**Formulation:**

The protein was lyophilized from a solution containing 0.1% sarkosyl in 1X PBS, pH 8.0.

Reconstitution:It is recommended to reconstitute the lyophilized protein in sterile H₂O to a concentration not less than 100 µg/mL and incubate the stock solution for at least 20 min to ensure sufficient re-dissolved.**Shipping :** Blue Ice

Stability and Storage:

Lyophilized protein should be stored at -20°C for 1 year.

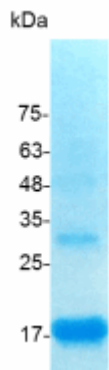
Upon reconstitution, store at 2°C to 8°C for up to 1 week. Further dilute in a buffer containing a carrier protein or stabilizer (e.g. 0.1%

BSA, 10%FBS, 5%HSA or 5% trehalose solution), protein aliquots should be stored at -20°C or -80°C for 3-6 months.

Category : Cytokines

Application : Cell culture, Elisa

Image:



SDS- PAGE analysis of recombinant human/mouse/rat Activin
A