

RMCH121

Recombinant MIF (Macrophage migration inhibitory factor), Human ,AF



Order 021-34695924
orders@ab-mart.com
Support 400-6123-828
support1@ab-mart.com
Web www.ab-mart.com.cn

5ug;20ug;100ug;500ug;

Synonym/Alternative name(s):

GLIF, mMIF, GIF, Glycosylation-inhibiting factor

Activity : N/A

Protein Description:

Macrophage migration inhibitory factor (MIF or MMIF), also known as glycosylation-inhibiting factor (GIF), L-dopachrome isomerase, or phenylpyruvate tautomerase is a protein that in humans is encoded by the MIF gene. MIF contributes to malignant disease progression on several different levels. Both circulating and intracellular MIF protein levels are elevated in cancer patients and MIF expression reportedly correlates with stage, metastatic spread and disease-free survival.

Protein Accession : P14174.4

Gene ID : 4282

Expression Sequence:

MPMFIVNTNVPRASVPDGFSELTQQLAQATGKPPQYIAVHVVPDQLMAFGGSSEPCALCSLHSIGKIGGAQNRYSKLLCGLLAERLRI
SPDRVYINYYDMNAANVGWNNSTFA with polyhistidine tag at the C-terminus.

Fusion tag : His-tag?at?the?C-terminus

Species : Human

Reactivity : Human

Expression Host : Escherichia coli

Source : E. coli

Purity/method:

>98% as determined by SDS-PAGE. Ni-NTA chromatography

Endotoxin level:

<0.1 EU per 1 µg of the protein by the LAL method.

Calculated Molecular Weight : 13.28 kDa

Formulation:

The protein was lyophilized from a solution containing 1X PBS, pH 8.0.

Reconstitution:

It is recommended to reconstitute the lyophilized protein in sterile H₂O to a concentration not less than 100 µg/mL and incubate the stock solution for at least 20 min to ensure sufficient re-dissolved.

Shipping : Blue Ice

Stability and Storage:

Lyophilized protein should be stored at -20°C for 1 year.

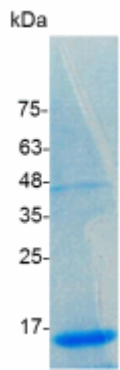
Upon reconstitution, store at 2°C to 8°C for up to 1 week. Further dilute in a buffer containing a carrier protein or stabilizer (e.g. 0.1%

BSA, 10%FBS, 5%HSA or 5% trehalose solution), protein aliquots should be stored at -20°C or -80°C for 3-6 months.

Category : Cytokines

Application : Cell culture, Elisa

Image:



SDS- PAGE analysis of recombinant human MIF