

RMCH144Recombinant GIF (Gastric intrinsic factor), Human, ^{IF} 5ug;20ug;100ug;500ug;

Order	021-34695924 orders@ab-mart.com
Support	400-6123-828 support1@ab-mart.com
Web	www.ab-mart.com.cn

Synonym/Alternative name(s) : CBLIF, IF, IFMH, INF, TCN3**Activity :** N/A**Protein Description:**

Intrinsic factor (IF), also known as gastric intrinsic factor (GIF), is a glycoprotein produced by the parietal cells of the stomach. It is necessary for the absorption of vitamin B12 in the ileum of the small intestine. The gastric intrinsic factor protein is encoded by the GIF gene in humans.

Protein Accession : P27352.2**Gene ID :** 2694**Expression Sequence:**

MAWFALYLLSLLWATAGTSTQTQSSCVPSAQEPLVNGIQVLMENSVTSSAYPNPSILIAMNLAGAYNLKAQKLLTYQLMSSDNDLTI
GQLGLTIMALTSSCRDPGDKVSILQRQ MENWAPSSPNAEASAFYGPLAILALCQKNSEATLPIAVRFAKLLANSSPFNVDTGAMATL
ALTCMYNKIPVGGSEEGYRSLFGQVLKDIVKISMKIKDNGIIGDIYSTGLAMQALSVTPEPSKKEWNCCKTTDMILNEIKQKGFHNPMPSIA
QILPSLKGKTYLDVPQVTCSPDHEVQPTLPSNPGPGPTSASNITVIYTINNQLRGVELLFNETINVSVKSGSVLLVLEEAQRKNPMFKFET
TMTSWGVLVSSINNAENVNHKTYWQFLSGVTPLNEGVDYIPFNHEHITANFTQY with polyhistidine tag at the C-terminus.

Fusion tag : His-tag?at?the?C-terminus**Species :** Human**Reactivity :** Human**Expression Host :** Escherichia coli**Source :** E. coli**Purity/method:**

>98% as determined by SDS-PAGE. Ni-NTA chromatography

Endotoxin level:

<0.1 EU per 1 µg of the protein by the LAL method.

Calculated Molecular Weight : 46.23 kDa**Formulation:**

The protein was lyophilized from a solution containing 1X PBS, pH 8.0.

Reconstitution:It is recommended to reconstitute the lyophilized protein in sterile H₂O to a concentration not less than 100 µg/mL and incubate the stock solution for at least 20 min to ensure sufficient re-dissolved.**Shipping :** Blue Ice**Stability and Storage:**

Lyophilized protein should be stored at -20°C for 1 year.

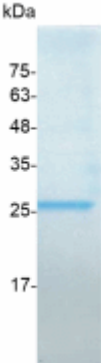
Upon reconstitution, store at 2°C to 8°C for up to 1 week. Further dilute in a buffer containing a carrier protein or stabilizer (e.g. 0.1%

BSA, 10%FBS, 5%HSA or 5% trehalose solution), protein aliquots should be stored at -20°C or -80°C for 3-6 months.

Category : Cytokines

Application : Cell culture, Elisa

Image:



SDS- PAGE analysis of recombinant human GIF