

RMCH145

Recombinant CD326, Human , AF



Order 021-34695924
orders@ab-mart.com

Support 400-6123-828
support1@ab-mart.com

Web www.ab-mart.com.cn

 5ug;20ug;100ug;500ug;**Synonym/Alternative name(s):**

EPCAM, DIAR5, EGP-2, EGP314, EGP40, ESA, HNPCC8, KS1/4, KSA, M4S1, MIC18, MK-1, TACSTD1, TROP1

Activity:

Measure by the ability of the immobilized protein to support the adhesion of the 3T3.

The ED50 for this effect is 0.2-1.7 ng/mL.

Protein Description:

Epithelial cell adhesion molecule (EpCAM) / CD326 is a pan-epithelial differentiation antigen that is expressed on almost all carcinomas as 17-1A(mAb) antigen. Besides, EpCAM is also involved in cell signaling, migration, proliferation, and differentiation. It is intricately linked with the Cadherin-Catenin pathway and hence the fundamental WNT pathway responsible for intracellular signaling and polarity. Recently, The epithelial cell adhesion molecule (Ep-CAM) is known to express in most epithelial malignancies and was reported as a tumor marker or a candidate of molecular targeting therapy. EpCAM can be used as diagnostic marker for various cancers. It appears to play a role in tumorigenesis and metastasis of carcinomas, so it can also act as a prognostic marker and as a potential target for immunotherapeutic strategies.

Protein Accession : CAA32870**Gene ID :** 4072**Expression Sequence:**

MQEECVCENYKLAIVNCFVNNNRQCQCTSVGAQNTVICSKLAACKLVMKAEMNGSKLGRRAKPEGALQNNNDGLYDPDCDESGLFKAK
QCNGTSMCWCVNTAGVRRRTDKDTEITCSERVRTYWIIILKHKAREKPYDSKSLRTALQKEITTRYQLDPKFITSILYENNVITIDLQNSS
KQTQNDVDIADVAYFEKDVKGESLFHSHKMDLTVNGEQLDLDPGQTLIYVDEKAPEFSMQGLK with polyhistidine tag at the
C-terminus.

Fusion tag : His-tag?at?the?C-terminus**Species :** Human**Reactivity :** Human**Expression Host :** Escherichia coli**Source :** E. coli**Purity/method:**

>95% as determined by SDS-PAGE.

Ni-NTA chromatography.

Endotoxin level:

<0.1 EU per 1 µg of the protein by the LAL method.

Calculated Molecular Weight : 28.36 kDa**Formulation:**

The protein was lyophilized from a solution containing 1X PBS, pH 8.0.

Reconstitution:

It is recommended to reconstitute the lyophilized protein in sterile H2O to a concentration not less than 100 µg/mL

and incubate the stock solution for at least 20 min to ensure sufficient re-dissolved.

Shipping : Blue Ice

Stability and Storage:

Lyophilized protein should be stored at -20°C for 1 year.

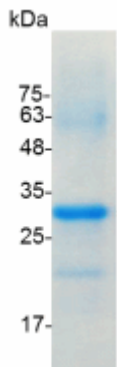
Upon reconstitution, store at 2°C to 8°C for up to 1 week. Further dilute in a buffer containing a carrier protein or stabilizer (e.g. 0.1%

BSA, 10%FBS, 5%HSA or 5% trehalose solution), protein aliquots should be stored at -20°C or -80°C for 3-6 months.

Category : Cytokines

Application : Cell culture, Elisa

Image:



SDS- PAGE analysis of recombinant human CD326