

RMCH148

Recombinant Galectin-1, Human , AF

 5ug;20ug;100ug;500ug;

Order	021-34695924 orders@ab-mart.com
Support	400-6123-828 support1@ab-mart.com
Web	www.ab-mart.com.cn

Synonym/Alternative name(s):

Beta-galactoside-binding lectin L-14-I, Galaptin, 14 kDa lectin, S-LAC lectin-1

Activity:

Measured by its ability to agglutinate human red blood cells.

The ED50 for this effect is <2 µg/mL.

Protein Description:

The galectin-1 protein is 135 amino acids in length and highly conserved across species. It can be found in the nucleus, the cytoplasm, the cell surface and in the extracellular space. Galectins, in general, lack a traditional signal sequence but are still secreted across the plasma membrane. Although galectins in general, and Gal-1 in particular, were first described as lectins that bind β-galactosides, it is now clear from the literature that as well as being a lectin, Gal-1 is also engaged in many protein-protein interactions. Gal-1 plays a number of crucial roles in neuronal cell differentiation and survival in both the central and the peripheral nervous systems, and the establishment and maintenance of T-cell tolerance and homeostasis in vivo.

Protein Accession : P09382.2**Gene ID :** 3956**Expression Sequence:**ACGLVASNLNLKPGECLRVRGEVAPDAKSFVLNLGKDSNNLCLHFNPRFNAHG DANTIVCNSKDGGAWGTEQREAVFPFQPGSVAEV
CITFDQANLTVKLPDGYEFKFPNRLNLEAINYMAADGDFKIKVAFD with polyhistidine tag at the N-terminus.**Fusion tag :** His-tag?at?the?N-terminus**Species :** Human**Reactivity :** Human**Expression Host :** Escherichia coli**Source :** E. coli**Purity/method:**

>98% as determined by SDS-PAGE. Ni-NTA chromatography

Endotoxin level:

<0.1 EU per 1 µg of the protein by the LAL method.

Calculated Molecular Weight : 15.5 kDa**Formulation:**

The protein was lyophilized from a solution containing 1X PBS, pH 7.4.

Reconstitution:

It is recommended to reconstitute the lyophilized protein in sterile H2O to a concentration not less than 100 µg/mL and incubate the stock solution for at least 20 min to ensure sufficient re-dissolved.

Shipping : Blue Ice**Stability and Storage:**

Lyophilized protein should be stored at -20°C for 1 year.

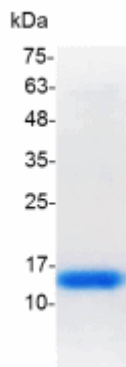
Upon reconstitution, store at 2°C to 8°C for up to 1 week. Further dilute in a buffer containing a carrier protein or stabilizer (e.g. 0.1%

BSA, 10%FBS, 5%HSA or 5% trehalose solution), protein aliquots should be stored at -20°C or -80°C for 3-6 months.

Category : Cytokines

Application : Cell culture, Elisa

Image:



SDS- PAGE analysis of recombinant human Galectin-1