

**RMCH171**

Recombinant SCF, Human , AF

 5ug;20ug;100ug;500ug;

<b>Order</b>	021-34695924 orders@ab-mart.com
<b>Support</b>	400-6123-828 support1@ab-mart.com
<b>Web</b>	www.ab-mart.com.cn

**Synonym/Alternative name(s):**

DCUA, DFNA69, FPH2, FPHH, KL-1, Kitl, MGF, SF, SHEP7, SLF, KIT ligand

**Activity:**

Measure by its ability to induce TF-1 cells proliferation.

The ED50 for this effect is &lt;5 ng/mL.

The specific activity of recombinant human SCF is > 5 x 10<sup>5</sup> IU/mg.**Protein Description:**

Stem Cell Factor (SCF) is a stromal cell- derived cytokine synthesized by fibroblasts and other cell types. SCF promotes proliferation and early differentiation of cells at the level of multipotential stem cells. SCF is a growth factor important for proliferation, and differentiation of hematopoietic stem cells. One of its roles is to change the BFU-E (burst-forming unit-erythroid) cells, which are the earliest erythrocyte precursors in the erythrocytic series, into the CFU-E (colony-forming unit-erythroid).

**Protein Accession :** P21583.1**Gene ID :** 4254**Expression Sequence:**MEGICRNRVTNNVKDVTKLVANLPKDYMILKYVPGMDVLPSCWISEMVVQLSDSLTDLDDKFSNISEGLSNYSIIDKLVNIVDDLVEC  
VKENSSKDLKKSFKSPEPRLFTPEEFFRIFNRSIDAFKDFVVASETSDCVVSSSTLSPEKDSRVSVTKPFMLPPVA with polyhistidine tag  
at the C-terminus**Fusion tag :** His-tag?at?the?C-terminus**Species :** Human**Reactivity :** Human**Expression Host :** Escherichia coli**Source :** E. coli**Purity/method:**

&gt;98% as determined by SDS-PAGE. Ni-NTA chromatography

**Endotoxin level:**

&lt;0.1 EU per 1 µg of the protein by the LAL method.

**Calculated Molecular Weight :** 19.4 kDa**Formulation:**

The protein was lyophilized from a solution containing 1X PBS containing, pH 7.4.

**Reconstitution:**It is recommended to reconstitute the lyophilized protein in sterile H<sub>2</sub>O to a concentration not less than 100 µg/mL and incubate the stock solution for at least 20 min to ensure sufficient re-dissolved.**Shipping :** Blue Ice**Stability and Storage:**

Lyophilized protein should be stored at -20°C for 1 year.

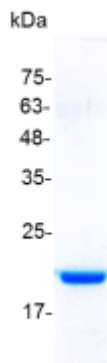
Upon reconstitution, store at 2°C to 8°C for up to 1 week. Further dilute in a buffer containing a carrier protein or stabilizer (e.g. 0.1%

BSA, 10%FBS, 5%HSA or 5% trehalose solution), protein aliquots should be stored at -20°C or -80°C for 3-6 months.

**Category :** Cytokines

**Application :** Cell culture, Elisa

**Image:**



SDS- PAGE analysis of recombinant human SCF