

**RMCM019**

Recombinant IL-22 (Interleukin-22), Mouse , AF



5ug;20ug;100ug;500ug;

<b>Order</b>	021-34695924 orders@ab-mart.com
<b>Support</b>	400-6123-828 support1@ab-mart.com
<b>Web</b>	www.ab-mart.com.cn

### **Synonym/Alternative name(s):**

IL-TIF, Cytokine ZCYTO18, If2b1, ILTIFa

### **Activity:**

Measure by its ability to induce IL-10 secretion in COLO205 cells.

The ED50 for this effect is <0.3 ng/mL.

### **Protein Description:**

Interleukin-22 (IL-22) a member of a group of cytokines called the IL-10 family or IL-10 superfamily (including IL-19, IL-20, IL-24, and IL-26), a class of potent mediators of cellular inflammatory responses. It shares use of IL-10R2 in cell signaling with other members of this family, IL-10, IL-26, IL-28A/B and IL-29. IL-22 is produced by activated NK and T cells and initiates innate immune responses against bacterial pathogens especially in epithelial cells such as respiratory and gut epithelial cells. IL-22 along with IL-17 is rapidly produced by splenic LTI-like cells and also produced by Th17 cells and likely plays a role in the coordinated response of both adaptive innate immune systems, autoimmunity and tissue regeneration.

**Protein Accession :** Q9JJY9.1

**Gene ID :** 50929

### **Expression Sequence:**

MLPVTNRCKLEVSNFQQPYIVNRTFMLAKEASLADNNTDVRLLIGEKLFRGVSAKDQCYLKQVLNFTLEDVLLPQSDRFQPYMQEVVP  
FLTKLSNQLSSCHISGDDQNIQKNVRRLLKETVKKLGESGEIKAIGELDLLFMSLRNACV with polyhistidine tag at the C-terminus.

**Fusion tag :** His-tag?at?the?C-terminus

**Species :** Mouse

**Reactivity :** Mouse

**Expression Host :** Escherichia coli

**Source :** E. coli

### **Purity/method:**

>98% as determined by SDS-PAGE. Ni-NTA chromatography

### **Endotoxin level:**

<0.1 EU per 1 µg of the protein by the LAL method.

**Calculated Molecular Weight :** 17.58 kDa

### **Formulation:**

The protein was lyophilized from a solution containing 1X PBS, pH 7.4.

### **Reconstitution:**

It is recommended to reconstitute the lyophilized protein in sterile H<sub>2</sub>O to a concentration not less than 100 µg/mL and incubate the stock solution for at least 20 min to ensure sufficient re-dissolved.

**Shipping :** Blue Ice

### **Stability and Storage:**

Lyophilized protein should be stored at -20°C for 1 year.

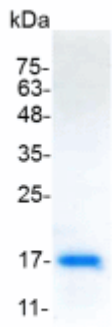
Upon reconstitution, store at 2°C to 8°C for up to 1 week. Further dilute in a buffer containing a carrier protein or stabilizer (e.g. 0.1%

BSA, 10%FBS, 5%HSA or 5% trehalose solution), protein aliquots should be stored at -20°C or -80°C for 3-6 months.

**Category :** Cytokines

**Application :** Cell culture, Elisa

**Image:**



SDS- PAGE analysis of recombinant mouse IL-22