

and incubate the stock solution for at least 20 min to ensure sufficient re-dissolved.

Shipping : Blue Ice

Stability and Storage:

Lyophilized protein should be stored at -20°C for 1 year.

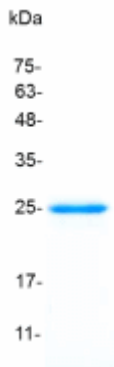
Upon reconstitution, store at 2°C to 8°C for up to 1 week. Further dilute in a buffer containing a carrier protein or stabilizer (e.g. 0.1%

BSA, 10%FBS, 5%HSA or 5% trehalose solution), protein aliquots should be stored at -20°C or -80°C for 3-6 months.

Category : Cytokines

Application : Cell culture, Elisa

Image:



SDS- PAGE analysis of recombinant mouse IL-27
EBI3