

RMCM071

Recombinant CXCL2 (C-X-C motif chemokine 2), Mouse , Ar



Order	021-34695924 orders@ab-mart.com
Support	400-6123-828 support1@ab-mart.com
Web	www.ab-mart.com.cn

5ug;20ug;100ug;500ug;

Synonym/Alternative name(s):

CINC, CINC-2a, GROb, Gr, Gro2, MIP, MIP-2, MIP-2a, Mgsa, Mgsa-b, Mi, Mip2, Scy, Scyb, Scyb2

Activity:

Measure by its ability to chemoattract BaF3 cells transfected with human CXCR2.

The ED50 for this effect is <0.5 ng/mL.

Protein Description:

CXCL2 is an ELR CXC chemokine. The structural and functional characteristics of CXCL2 have relationship with with GRO1 (CXCL1), GRO3 (CXCL3), and interleukin-8 (CXCL8). It is produced by activated monocytes, neutrophils and macrophages. In addition, it also expresses at sites of inflammation. It has been detected that CXCL2 is highly expressed in serum of patients with the disease "esophageal squamous cell carcinoma" (ESCC) .

Protein Accession : P10889

Gene ID : 20310

Expression Sequence:

AVVASELRCQCLKTLPRVDFKNIQSLSVTPPGPHCAQTEVIATLKGQKVCVLDPEAPLVQKIIQKILNKGKAN with polyhistidine tag at the N-terminus.

Fusion tag : His-tag?at?the?N-terminus

Species : Mouse

Reactivity : Mouse

Expression Host : Escherichia coli

Source : E. coli

Purity/method:

>98% as determined by SDS-PAGE. Ni-NTA chromatography

Endotoxin level:

<0.1 EU per 1 µg of the protein by the LAL method.

Calculated Molecular Weight : 8.66 kDa

Formulation:

The protein was lyophilized from a solution containing 1X PBS, pH 7.4.

Reconstitution:

It is recommended to reconstitute the lyophilized protein in sterile H2O to a concentration not less than 100 µg/mL and incubate the stock solution for at least 20 min to ensure sufficient re-dissolved.

Shipping : Blue Ice

Stability and Storage:

Lyophilized protein should be stored at -20°C for 1 year.

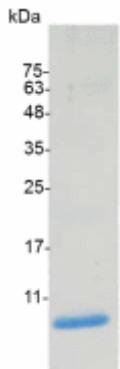
Upon reconstitution, store at 2°C to 8°C for up to 1 week. Further dilute in a buffer containing a carrier protein or stabilizer (e.g. 0.1%

BSA, 10%FBS, 5%HSA or 5% trehalose solution), protein aliquots should be stored at -20°C or -80°C for 3-6 months.

Category : Cytokines

Application : Cell culture, Elisa

Image:



SDS- PAGE analysis of recombinant mouse CXCL2