

**RMCM075**

Recombinant IL-17D (Interleukin-17D), Mouse , AF



<b>Order</b>	021-34695924 orders@ab-mart.com
<b>Support</b>	400-6123-828 support1@ab-mart.com
<b>Web</b>	www.ab-mart.com.cn

5ug;20ug;100ug;500ug;

**Synonym/Alternative name(s) :** AI462269

**Activity :** N/A

**Protein Description:**

The protein encoded by this gene is a cytokine that shares the sequence similarity with IL17. The treatment of endothelial cells with this cytokine has been shown to stimulate the production of other cytokines including IL6, IL8 and CSF2/ GM-CSF. The increased expression of IL8 induced by this cytokine was found to be NF-kappa B-dependent.

**Protein Accession :** Q8K4C4

**Gene ID :** 239114

**Expression Sequence:**

ALRTGRRPARPRDCADRPEELLEQLYGRLAAGVLSAFHHTLQLGPREQARNASCPAGGRAADRRFRPPTNLRVSPWAYRISYDPA RFP RYLPEAYCLCRGCLTGLYGEEDFRFRSTPVFSPAVLRRTAACAGGRSVYAEHYITIPVGCTCVPEPDKSAZDSANSSMDKLLLPADRPA GR with polyhistidine tag at the N-terminus.

**Fusion tag :** His-tag?at?the?N-terminus

**Species :** Mouse

**Reactivity :** Mouse

**Expression Host :** Escherichia coli

**Source :** E. coli

**Purity/method:**

>98% as determined by SDS-PAGE. Ni-NTA chromatography

**Endotoxin level:**

<0.1 EU per 1 µg of the protein by the LAL method.

**Calculated Molecular Weight :** 20.74 kDa

**Formulation:**

The protein was lyophilized from a solution containing 20 mM sodium citrate, 0.2 M NaCl, pH 4.5.

**Reconstitution:**

It is recommended to reconstitute the lyophilized protein in sterile H2O to a concentration not less than 100 µg/mL and incubate the stock solution for at least 20 min to ensure sufficient re-dissolved.

**Shipping :** Blue Ice

**Stability and Storage:**

Lyophilized protein should be stored at -20°C for 1 year.

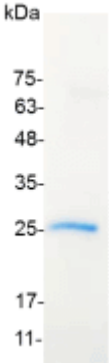
Upon reconstitution, store at 2°C to 8°C for up to 1 week. Further dilute in a buffer containing a carrier protein or stabilizer (e.g. 0.1%

BSA, 10%FBS, 5%HSA or 5% trehalose solution), protein aliquots should be stored at -20°C or -80°C for 3-6 months.

**Category :** Cytokines

**Application :** Cell culture, Elisa

**Image:**



SDS- PAGE analysis of recombinant mouse IL-17D