

RMCS021Recombinant CCL2 (C-C Motif Chemokine Ligand 2), Swine
, AF 5ug;20ug;

| | |
|----------------|--------------------------------------|
| Order | 021-34695924 orders@ab-mart.com |
| Support | 400-6123-828 support1@ab-mart.com |
| Web | www.ab-mart.com.cn |

Synonym/Alternative name(s) : MCP-1**Activity :** N/A**Protein Description:**

CCL2, also known as MCP-1, is belonging to the CC ? chemokine family. CCL2 can be identified in endothelial cells, smooth muscle cells and monocytes as the results of reaction to several atherogenic stimulants, such as CD40 ligand, (IL-1 β) and oxidized low density lipoprotein , interleukin-1 β platelet derived growth factor (PDGF). Recent study shows that in vivo MCP1 have several critical roles in atherosclerosis. Additionally, MCP-1 has been proved involving in monocytic infiltration of tissues during several inflammatory diseases, and has been implicated in macrophage-mediated tumor growth inhibition in mice. In addition, CCL2 has been shown to have direct effects on tumor cells in an autocrine and paracrine fashion in multiple cancers, including sarcoma, lung, cervix, ovary, breast, and prostate.

Protein Accession : P42831.1**Gene ID :** 397422**Expression Sequence:**

QPDAINSPVTCCYTLTSKKISMQRRLMSYRRVTSSKCPKEAVIFKTIAGKEICAEPKQKWWQDSISHLDKKNQTPKP with polyhistidine tag at the N-terminus.

Fusion tag : His-tag?at?the?N-terminus**Species :** Swine**Reactivity :** Pig**Expression Host :** Escherichia coli**Source :** E. coli**Purity/method:**

>98% as determined by SDS-PAGE. Ni-NTA chromatography

Endotoxin level:

<0.1 EU per 1 μ g of the protein by the LAL method.

Calculated Molecular Weight : 9.42 kDa**Formulation:**

The protein was lyophilized from a solution containing 1X PBS, pH 7.4.

Reconstitution:

It is recommended to reconstitute the lyophilized protein in sterile H₂O to a concentration not less than 100 μ g/mL and incubate the stock solution for at least 20 min to ensure sufficient re-dissolved.

Shipping : Blue Ice**Stability and Storage:**

Lyophilized protein should be stored at -20°C for 1 year.

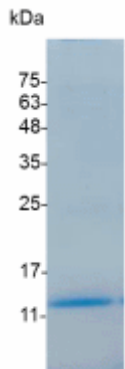
Upon reconstitution, store at 2°C to 8°C for up to 1 week. Further dilute in a buffer containing a carrier protein or stabilizer (e.g. 0.1%

BSA, 10%FBS, 5%HSA or 5% trehalose solution), protein aliquots should be stored at -20°C or -80°C for 3-6 months.

Category : Cytokines

Application : Cell culture, Elisa

Image:



SDS- PAGE analysis of recombinant swine CCL2