

RMCS023

Recombinant IGF-I (Insulin-like growth factor-I), Swine
, AF



5ug;20ug;

Order	021-34695924 orders@ab-mart.com
Support	400-6123-828 support1@ab-mart.com
Web	www.ab-mart.com.cn

Synonym/Alternative name(s) : IGF-1, Npt2B

Activity : N/A

Protein Description:

Insulin-like growth factor 1 (IGF-1), also called somatomedin C, is a protein that in humans is encoded by the IGF1 gene. IGF-1 is a hormone similar in molecular structure to insulin. It plays an important role in childhood growth and continues to have anabolic effects in adults. A synthetic analog of IGF-1, mecasermin, is used for the treatment of growth failure.

Protein Accession : P16545.1

Gene ID : 397491

Expression Sequence:

MGPETLCGAELVDALQFVCGDRGFYFNKPTGYGSSRRAPQTGIVDECCFRSCDLRRLREMYCAPLKPAKSA with polyhistidine tag at the C-terminus.

Fusion tag : His-tag?at?the?C-terminus

Species : Swine

Reactivity : Pig

Expression Host : Escherichia coli

Source : E. coli

Purity/method:

>98% as determined by SDS-PAGE. Ni-NTA chromatography

Endotoxin level:

<0.1 EU per 1 µg of the protein by the LAL method.

Calculated Molecular Weight : 8.59 kDa

Formulation:

The protein was lyophilized from a solution containing 1X PBS, pH 8.0.

Reconstitution:

It is recommended to reconstitute the lyophilized protein in sterile H₂O to a concentration not less than 100 µg/mL and incubate the stock solution for at least 20 min to ensure sufficient re-dissolved.

Shipping : Blue Ice

Stability and Storage:

Lyophilized protein should be stored at -20°C for 1 year.

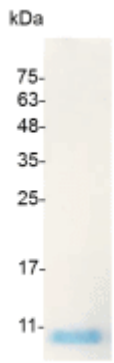
Upon reconstitution, store at 2°C to 8°C for up to 1 week. Further dilute in a buffer containing a carrier protein or stabilizer (e.g. 0.1%

BSA, 10%FBS, 5%HSA or 5% trehalose solution), protein aliquots should be stored at -20°C or -80°C for 3-6 months.

Category : Cytokines

Application : Cell culture, Elisa

Image:



SDS- PAGE analysis of recombinant swine IGF-I