

RMGH022

Recombinant IL-18, Human, GMP



Order 021-34695924
orders@ab-mart.com

Support 400-6123-828
support1@ab-mart.com

Web www.ab-mart.com.cn

 100ug;**Synonym/Alternative name(s)** : IGIF, IL-1g, IL1F4**Activity:**

Measure by its ability to induce IFN gamma secretion in KG-1 cells.

The ED50 for this effect is <6 ng/mL.

Protein Description:

Interleukin-18 (IL-18) belongs to the IL-1 superfamily and is constitutively produced by macrophages, dendritic cells (DCs) and other cells. IL-18 binds to the receptor of IL-18 (IL-18R) and initiate the recruitment and heterodimerization of the IL-18RAcP, leading to downstream activation of NF-κB. After stimulation with IL-18, multiple cytokines including IFN-γ, IL-13, IL-4, IL-8, and GM-CSF and both Th1 and Th2 lymphokines could be produced by different cells. As an immunoregulatory cytokine, IL-18 can promote development of T helper 1 (Th1) cells, which maximizes the production of IFN by synergistically stimulating to mature Th1 effectors in combination with IL-12. On the contrary, it inhibits the production of the anti-inflammatory cytokine IL-10. In addition, IL-18 exhibits multiple proinflammatory functions, such as increases in cell adhesion molecules, nitric oxide synthesis, and chemokine production.

Protein Accession : Q14116.1**Gene ID** : 3606**Expression Sequence:**

MYFGKLESKLSVIRNLNDQVLFIDQGNRPLFEDMTDSDCRDNAPRTIFIISMYSQPRGMAVTISVKCEKISTLSCENKIISFKEMNPPD
NIKDKTSDIIFQRSVPGHDNKMQFESSYEGYFLACEKERDLFKLILKKEDELGDRSIMFTVQNE with polyhistidine tag at the C-terminus.

Fusion tag : His-tag?at?the?C-terminus**Species** : Human**Reactivity** : Human**Expression Host** : Escherichia coli**Source** : E. coli**Purity/method:**

>98% as determined by SDS-PAGE. Ni-NTA chromatography

Endotoxin level:

<0.1 EU per 1 μg of the protein by the LAL method.

Calculated Molecular Weight : 19.2 kDa**Formulation:**

The protein was lyophilized from a solution containing 1X PBS, pH 8.0.

Reconstitution:

It is recommended to reconstitute the lyophilized protein in sterile H₂O to a concentration not less than 100 μg/mL and incubate the stock solution for at least 20 min to ensure sufficient re-dissolved.

Shipping : Blue Ice

Stability and Storage:

Lyophilized protein should be stored at -20°C for 1 year.

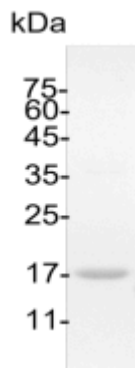
Upon reconstitution, store at 2°C to 8°C for up to 1 week. Further dilute in a buffer containing a carrier protein or stabilizer (e.g. 0.1%

BSA, 10%FBS, 5%HSA or 5% trehalose solution), protein aliquots should be stored at -20°C or -80°C for 3-6 months.

Category : Cytokines

Application : Cell culture, Elisa

Image:



SDS- PAGE analysis of GMP human IL-18