

RMGH171

Recombinant SCF, Human, GMP

 100ug;

Order	021-34695924 orders@ab-mart.com
Support	400-6123-828 support1@ab-mart.com
Web	www.ab-mart.com.cn

Synonym/Alternative name(s):

DCUA, DFNA69, FPH2, FPHH, KL-1, Kitl, MGF, SF, SHEP7, SLF, KIT ligand

Activity:

Measure by its ability to induce TF-1 cells proliferation.

The ED50 for this effect is <5 ng/mL.

The specific activity of recombinant human SCF is > 5 x 10⁵ IU/mg.**Protein Description:**

Stem Cell Factor (SCF) is a 166-amino-acid protein with a monomeric molecular weight of approximately 18.5 kDa. SCF is the ligand for the tyrosine kinase receptor c-kit, which regulates other growth factors, such as granulocyte colony-stimulating factor (G-CSF), granulocyte macrophage-colony-stimulating factor (GM-CSF), and interleukin-3 to stimulate proliferation, and differentiation of hematopoietic stem cells. SCF can be produced by a variety of cells, including fibroblasts, smooth muscle, endothelial cells, mast cells and bone marrow macrophages endothelial cells.

Protein Accession : P21583.1**Gene ID :** 4254**Expression Sequence:**

MEGICRNRVTNNVKDVTKLVANLPKDYMILTKYVPGMDVLPSCWISEMVVQLSDSLDLLDKFSNISEGLSNYSIIDKLVNIVDDLVEC
VKENSSKDLKKSFKSPEPRLFTPEEFFRIFNRSIDAFKDFVVASETSDCVVSSSTLSPEKDSRVSVTKPFMLPPVA with polyhistidine tag
at the C-terminus

Fusion tag : His-tag?at?the?C-terminus**Species :** Human**Reactivity :** Human**Expression Host :** Escherichia coli**Source :** E. coli**Purity/method:**

>98% as determined by SDS-PAGE. Ni-NTA chromatography

Endotoxin level:

<0.1 EU per 1 µg of the protein by the LAL method.

Calculated Molecular Weight : 19.4 kDa**Formulation:**

The protein was lyophilized from a solution containing 1X PBS containing, pH 7.4.

Reconstitution:It is recommended to reconstitute the lyophilized protein in sterile H₂O to a concentration not less than 100 µg/mL and incubate the stock solution for at least 20 min to ensure sufficient re-dissolved.**Shipping :** Blue Ice**Stability and Storage:**

Lyophilized protein should be stored at -20°C for 1 year.

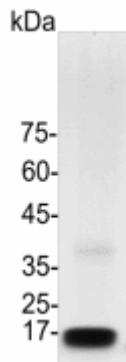
Upon reconstitution, store at 2°C to 8°C for up to 1 week. Further dilute in a buffer containing a carrier protein or stabilizer (e.g. 0.1%

BSA, 10%FBS, 5%HSA or 5% trehalose solution), protein aliquots should be stored at -20°C or -80°C for 3-6 months.

Category : Cytokines

Application : Cell culture, Elisa

Image:



SDS- PAGE analysis of GMP human SCF